

GRIFFIN, GEORGIA

AL-6140 (FAA)

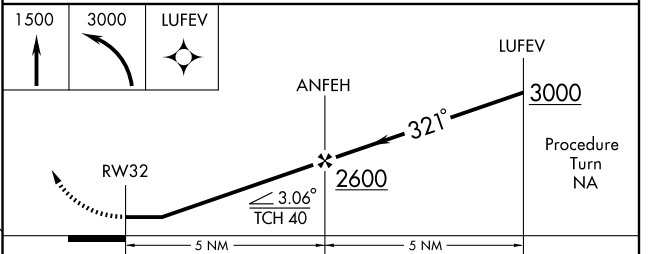
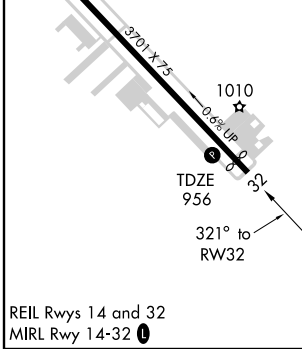
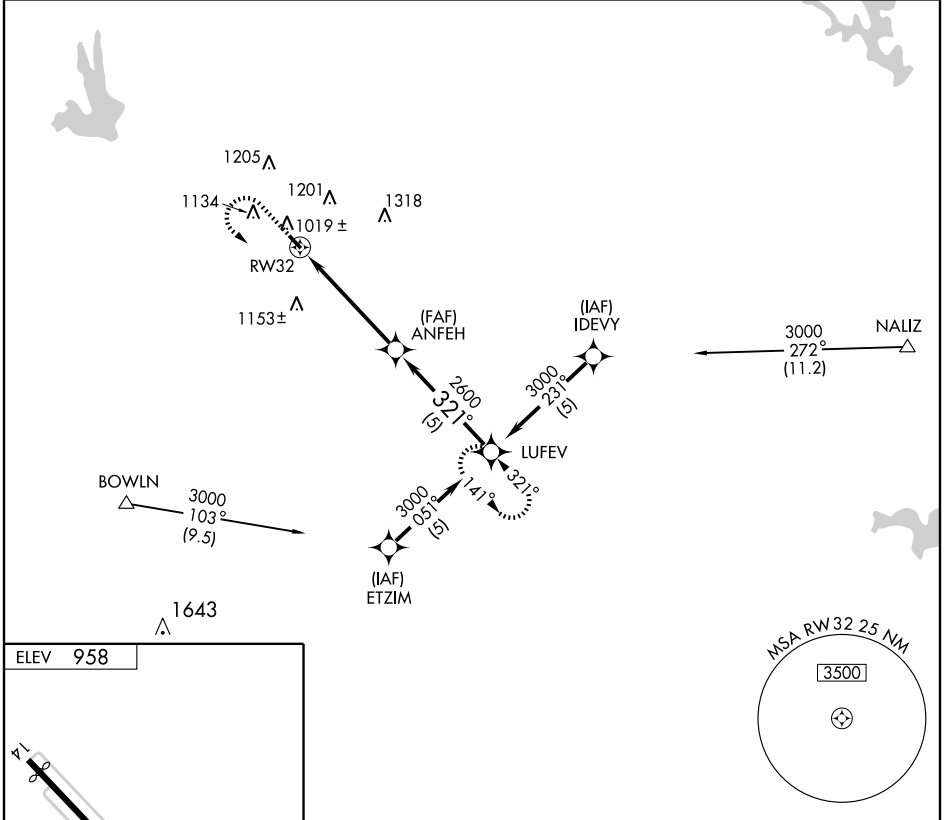
GPS RWY 32

GRIFFIN-SPALDING COUNTY (6A2)

APP CRS 321°	Rwy Idg 3501
	TDZE 956
	Apt Elev 958

<p>▼ ▲ NA</p>	<p>MISSED APPROACH: Climb to 1500 then climbing left turn to 3000 direct LUFEV WP and hold.</p>		
-------------------	---	--	--

AWOS-3 119.750	ATLANTA APP CON 128.575	CLNC DEL 128.575 381.65	UNICOM 123.075 (CTAF) 0
--------------------------	-----------------------------------	-----------------------------------	-----------------------------------



CATEGORY	A	B	C	D
S-32	1260-1	304 (400-1)		NA
CIRCLING	1400-1 442 (500-1)	1560-1 602 (700-1)		NA

GRIFFIN, GEORGIA
Orig-A 08325

33°14'N-84°16'W

GRIFFIN-SPALDING COUNTY (6A2)

GPS RWY 32

SE-4, 22 OCT 2009 to 19 NOV 2009

SE-4, 22 OCT 2009 to 19 NOV 2009

