

GRIFFIN, GEORGIA

AL-6140 (FAA)

GPS RWY 14

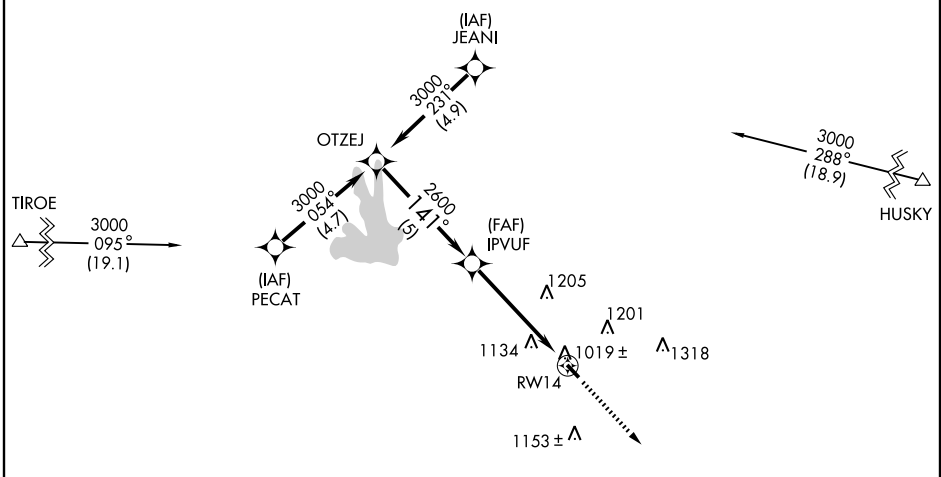
GRIFFIN-SPALDING COUNTY (6A2)

APP CRS 141°	Rwy Idg 3501
	TDZE 958
	Apt Elev 958

MISSED APPROACH: Climb to 3000 direct LUFEV WP and hold.

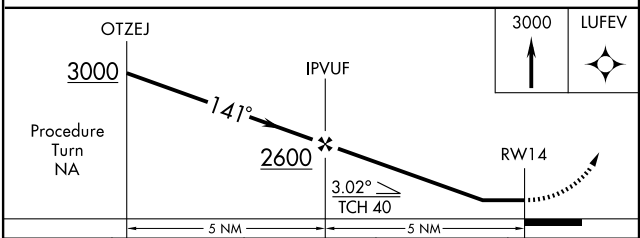
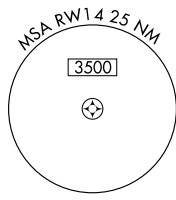
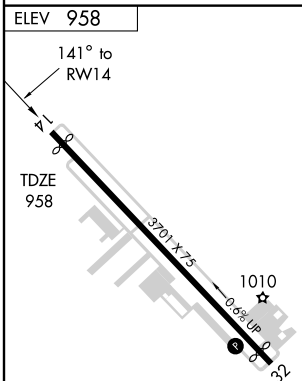
AWOS-3 119.750	ATLANTA APP CON 128.575	CLNC DEL 128.575 381.65	UNICOM 123.075 (CTAF) 0
--------------------------	-----------------------------------	-----------------------------------	-----------------------------------

△ 1465 ±



SE-4, 22 OCT 2009 to 19 NOV 2009

SE-4, 22 OCT 2009 to 19 NOV 2009



CATEGORY	A	B	C	D
S-14	1440-1	482 (500-1)	NA	NA
CIRCLING	1440-1 482 (500-1)	1560-1 602 (700-1)	NA	NA

REIL Rwy 14 and 32
MIRL Rwy 14-32 0

GRIFFIN, GEORGIA

Orig-A 08325

GRIFFIN-SPALDING COUNTY (6A2)

33°14'N-84°16'W

GPS RWY 14