

# VOR RWY 23

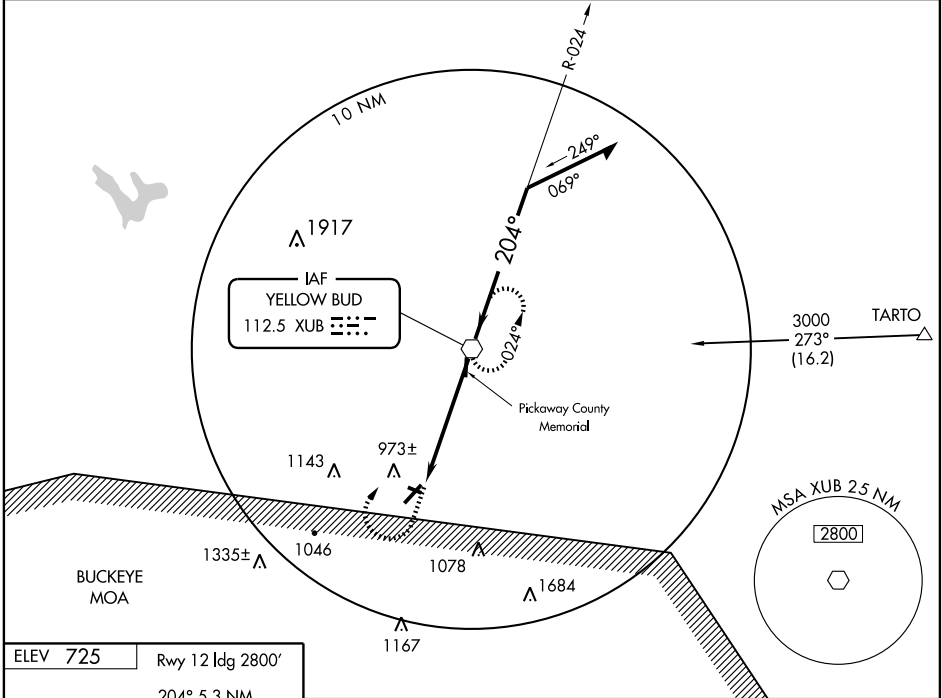
CHILLICOTHE / ROSS COUNTY (R/ZT)

VOR XUB <b>112.5</b>	APP CRS <b>204°</b>	Rwy Idg TDZE Apt Elev	<b>5400</b> <b>716</b> <b>725</b>
-------------------------	------------------------	-----------------------------	---

▼ Obtain local altimeter setting on CTAF; when not received, use Port Columbus Intl altimeter setting.  
 ▲ NA Circling NA to Rwy's 12 and 30.

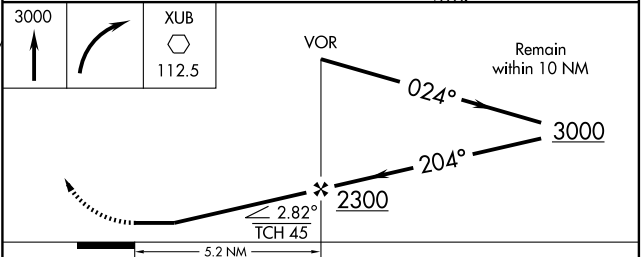
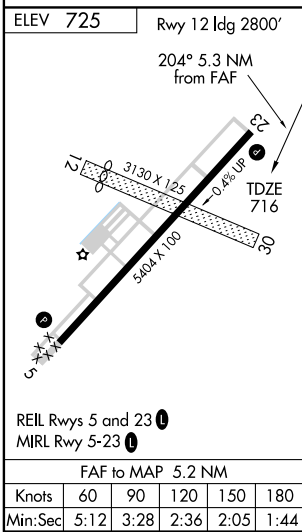
MISSED APPROACH: Climb to 3000 then right turn direct XUB VOR and hold.

AWOS-3 <b>119.225</b>	COLUMBUS APP CON <b>132.3 317.775</b>	UNICOM <b>122.8</b> (CTAF)	<b>123.0</b>
--------------------------	--	-------------------------------	--------------



EC-2, 22 OCT 2009 to 19 NOV 2009

EC-2, 22 OCT 2009 to 19 NOV 2009



CATEGORY	A	B	C	D
S-23	1220-1	504 (500-1)	1220-1½	504 (500-1½)
CIRCLING	1340-1 615 (700-1)	1360-1 635 (700-1)	1380-1¾ 655 (700-1¾)	1400-2¼ 675 (700-2¼)
PORT COLUMBUS INTL ALTIMETER SETTING MINIMUMS				
S-23	1320-1	604 (600-1)	1320-1¾ 604 (600-1¾)	1320-2 604 (600-2)
CIRCLING	1420-1 695 (700-1)	1460-1 735 (800-1)	1480-2¼ 755 (800-2¼)	1500-2½ 775 (800-2½)