

ORR, MINNESOTA

AL-6137 (FAA)

NDB RWY 13

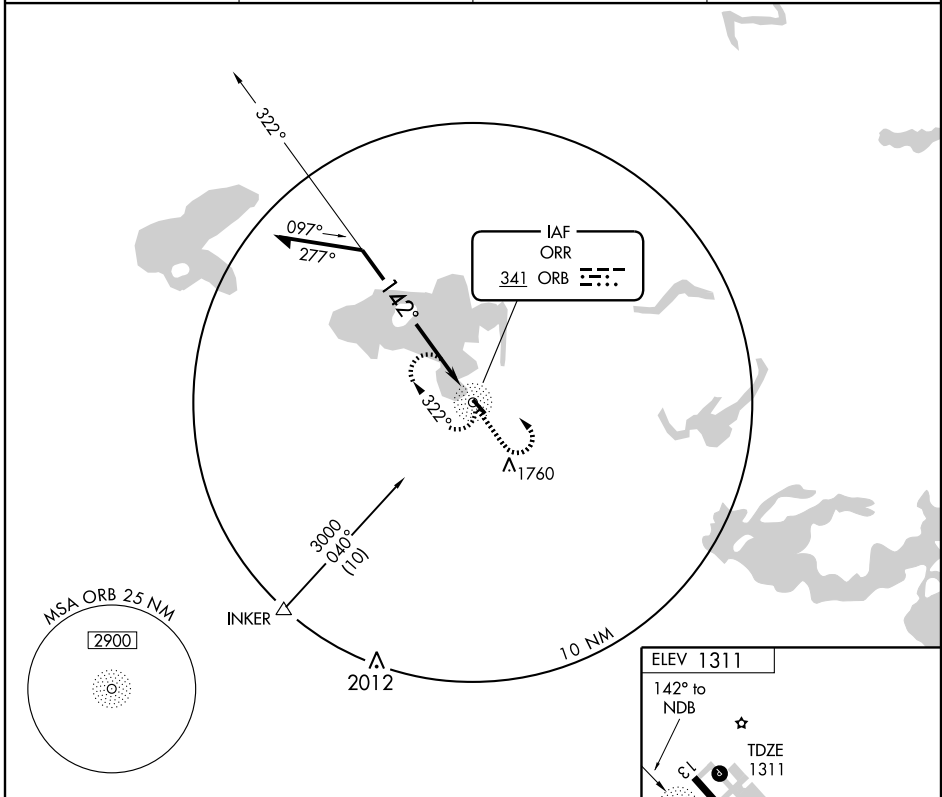
ORR RGNL (ORB)

NDB ORB 341	APP CRS 142°	Rwy Idg 4001
		TDZE 1311
		Apt Elev 1311

▽
△ NA

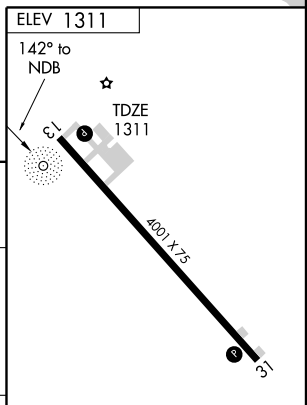
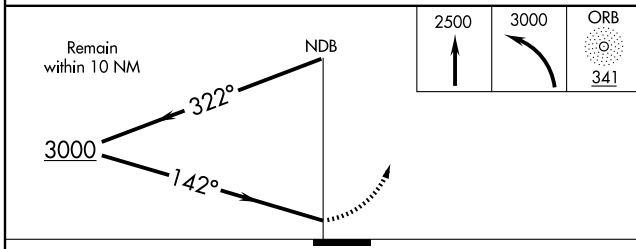
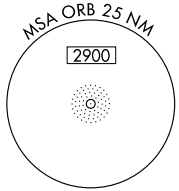
MISSED APPROACH: Climb to 2500 then climbing left turn to 3000 direct ORB NDB and hold.

AWOS-3 118.325	MINNEAPOLIS CENTER 120.9 377.1	GCO 121.725	UNICOM 122.8 (CTAF) 0
--------------------------	--	-----------------------	---------------------------------



NC-1, 22 OCT 2009 to 19 NOV 2009

NC-1, 22 OCT 2009 to 19 NOV 2009



CATEGORY	A	B	C	D
S-13	2000-1 689 (700-1)		2000-2 689 (700-2)	2000-2 1/4 689 (700-2 1/4)
CIRCLING	2000-1 689 (700-1)		2000-2 689 (700-2)	2120-2 1/2 809 (900-2 1/2)

REIL Rwy 13 and 31 0
MIRL Rwy 13-31 0

ORR, MINNESOTA
Amdt 8 09071

48°01'N-92°51'W

ORR RGNL (ORB) NDB RWY 13