

ORR, MINNESOTA

AL-6137 (FAA)

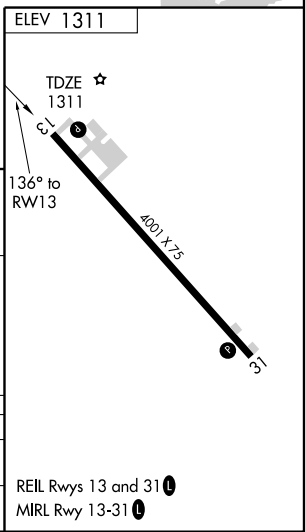
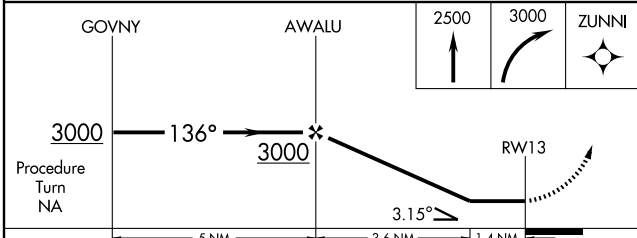
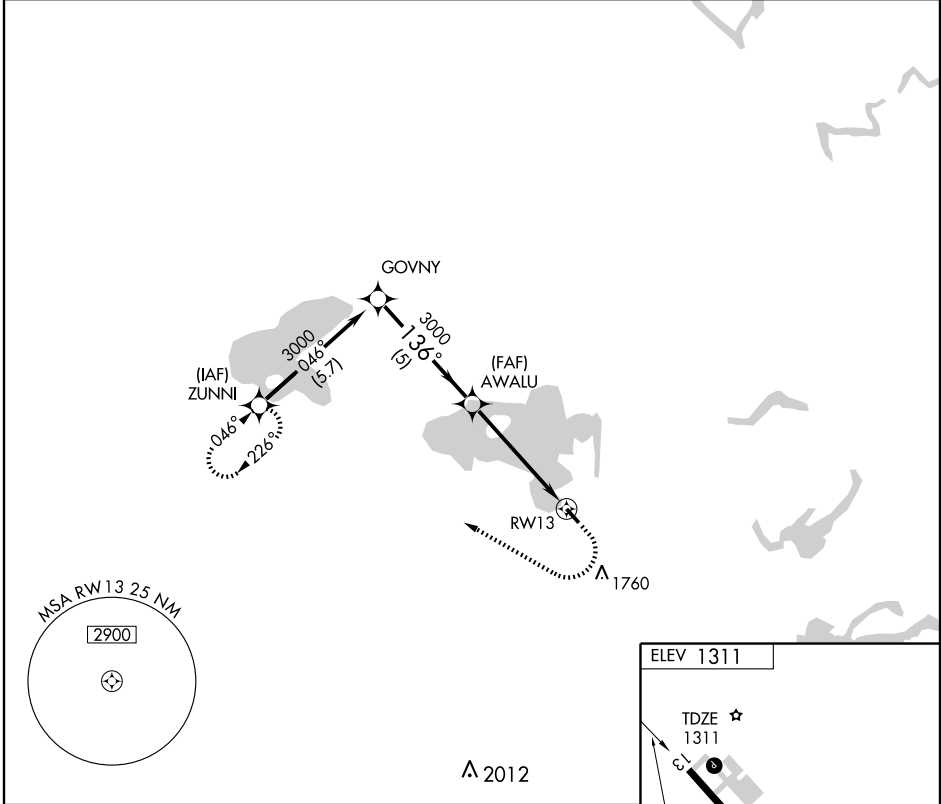
# GPS RWY 13

ORR RGNL(ORB)

APP CRS	Rwy Idg	<b>4001</b>
<b>136°</b>	TDZE	<b>1311</b>
	Apt Elev	<b>1311</b>

 NA	MISSED APPROACH: Climb to 2500 then climbing right turn to 3000 direct ZUNNI WP and hold.
--------	---

AWOS-3 <b>118.325</b>	MINNEAPOLIS CENTER <b>120.9 377.1</b>	GCO <b>121.725</b>	UNICOM <b>122.8 (CTAF) 0</b>
--------------------------	--	-----------------------	---------------------------------



CATEGORY	A	B	C	D
S-13	1760-1 449 (500-1)		1760-1½ 449 (500-1½)	1760-1½ 449 (500-1½)
CIRCLING	1880-1 569 (600-1)	1900-1 589 (600-1)	1900-1½ 589 (600-1½)	2120-2½ 809 (900-2½)

ORR, MINNESOTA  
Orig 09071

48°01'N-92°51'W

# ORR RGNL(ORB) GPS RWY 13

NC-1, 22 OCT 2009 to 19 NOV 2009

NC-1, 22 OCT 2009 to 19 NOV 2009