

# VOR-A OAKDALE (O27)

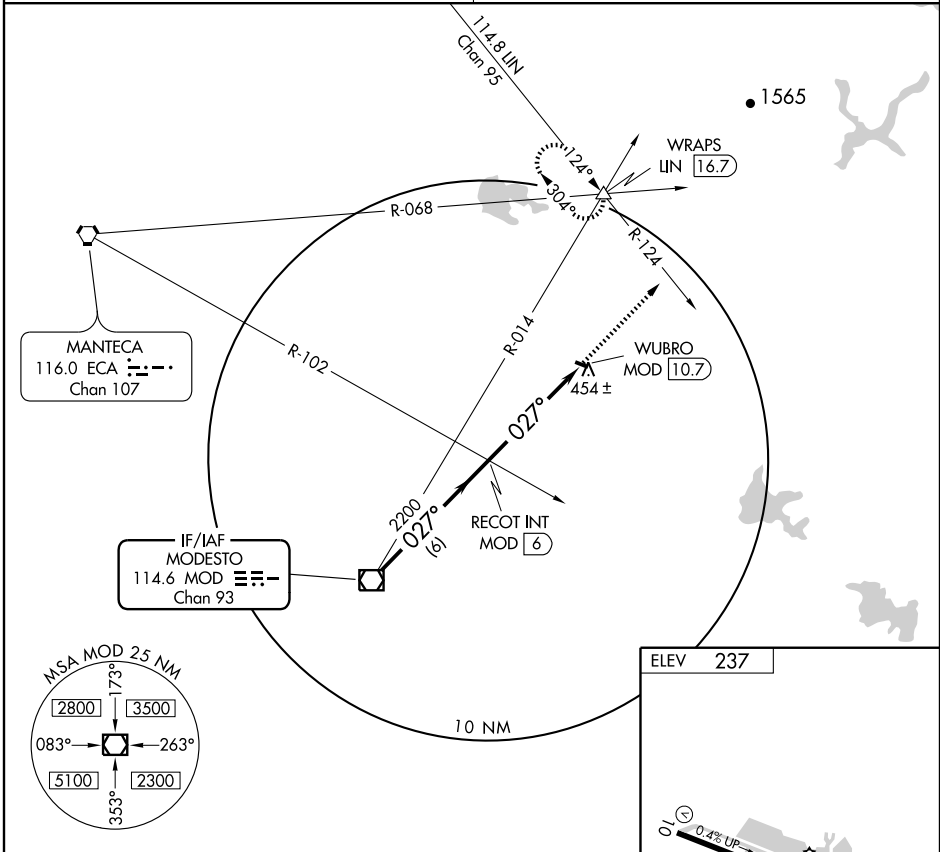
VOR/DME MOD <b>114.6</b> Chan <b>93</b>	APP CRS <b>027°</b>	Rwy Idg TDZE Apt Elev <b>N/A</b> <b>N/A</b> <b>237</b>
---	------------------------	--

**▽** Use Stockton altimeter setting, when not received, procedure NA. Circling to Rwy 28 NA at night.  
**△** NA

**MISSED APPROACH:** Climb to 3000 via heading 027° and LIN R-124 to WRAPS Int/LIN 16.7 DME and hold, continue climb-in-hold to 3000.

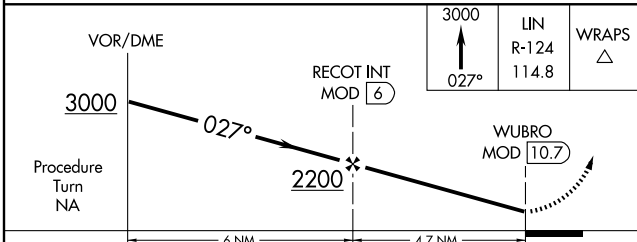
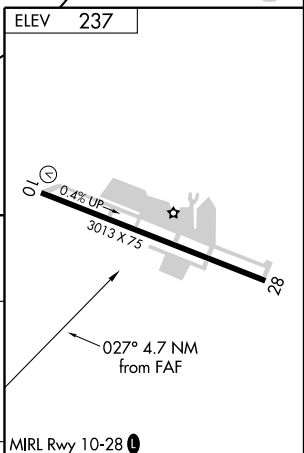
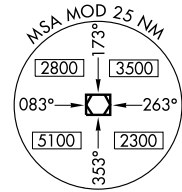
NORCAL APP CON  
**125.1 363.2**

UNICOM  
**122.8 (CTAF) 0**



MANTECA  
116.0 ECA  
Chan 107

IF/IAF  
MODESTO  
114.6 MOD  
Chan 93



CATEGORY	A	B	C	D	FAF to MAP 4.7 NM						
CIRCLING	860-1 623 (700-1)		NA			Knots	60	90	120	150	180
						Min:Sec	4:42	3:08	2:21	1:53	1:34

SW-2, 22 OCT 2009 to 19 NOV 2009

SW-2, 22 OCT 2009 to 19 NOV 2009