

# RNAV (GPS) RWY 10

OAKDALE (O27)

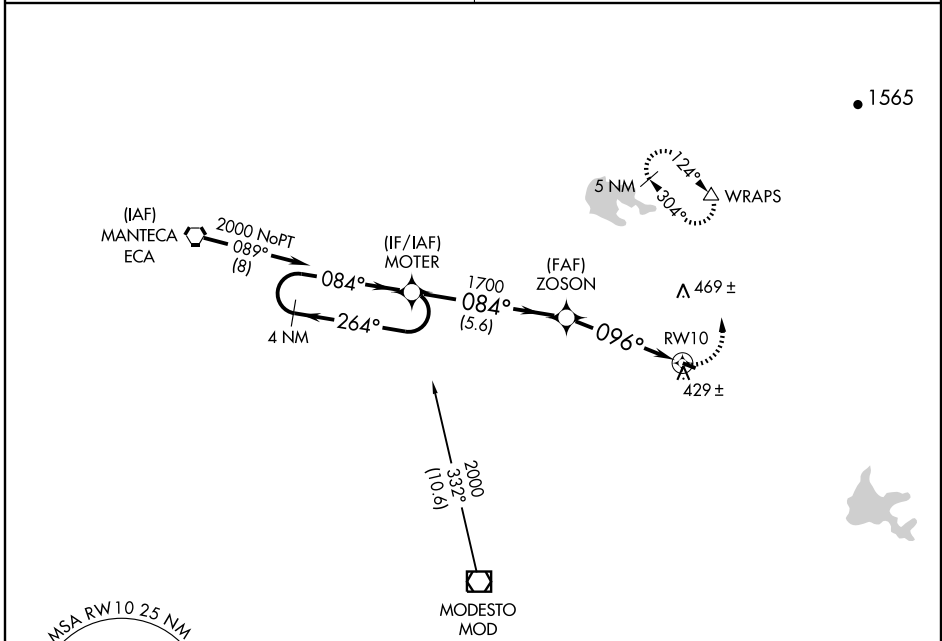
APP CRS	Rwy Idg	<b>3013</b>
<b>096°</b>	TDZE	<b>237</b>
	Apt Elev	<b>237</b>

**▽** DME/DME RNP-0.3 NA.  
**△** NA Use Stockton altimeter setting, when not received, procedure NA.  
 Circling to Rwy 28 NA at night.

MISSED APPROACH: Climbing left turn to 3000 direct WRAPS and hold.

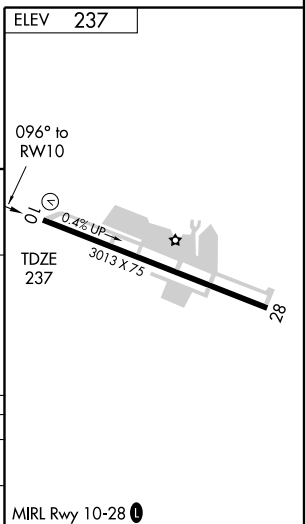
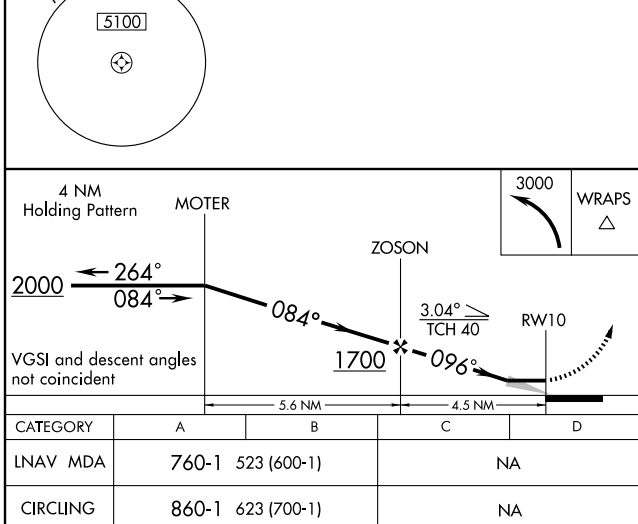
NORCAL APP CON  
**125.1 363.2**

UNICOM  
**122.8 (CTAF)**



SW-2, 22 OCT 2009 to 19 NOV 2009

SW-2, 22 OCT 2009 to 19 NOV 2009



OAKDALE, CALIFORNIA  
 Orig-A 09239

37°45'N-120°48'W

# RNAV (GPS) RWY 10

OAKDALE (O27)