

RNAV (GPS) RWY 18

HATTIESBURG-LAUREL RGNL (PIB)

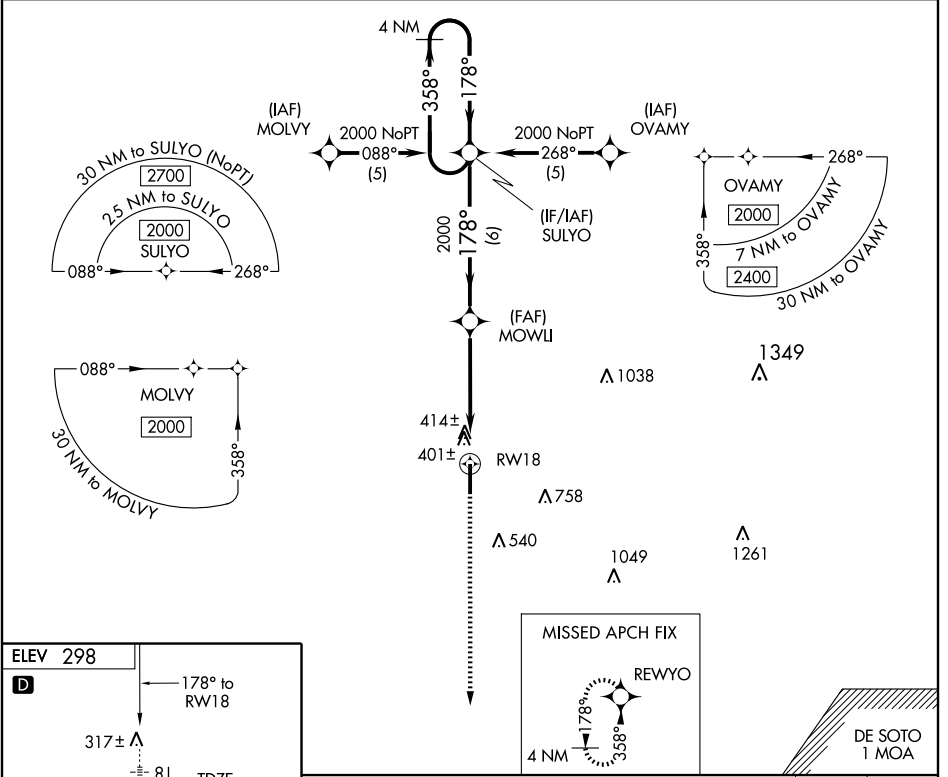
WAAS CH 49201 W18A	APP CRS 178°	Rwy ldg 6501 TDZE 298 Apt Elev 298
--	------------------------	---

⚠ DME/DME RNP-0.3 NA. For uncompensated BARO-VNAV systems, LNAV/VNAV NA below -15°C (5°F) or above 48°C (119°F). Visibility reduction by helicopters NA.
⚠ For inoperative MALSR, increase LPV and LNAV/VNAV all Cats and LNAV Cat D visibilities to 1¼. Inoperative table does not apply to LNAV Cats A/B/C.



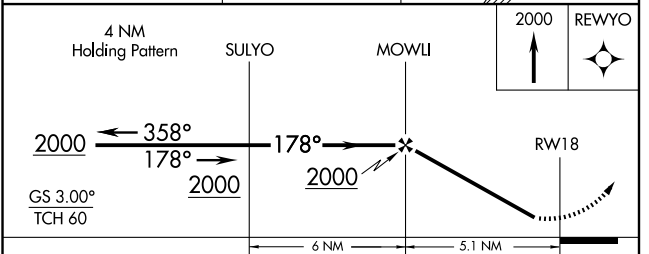
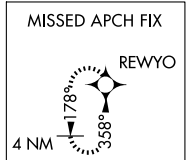
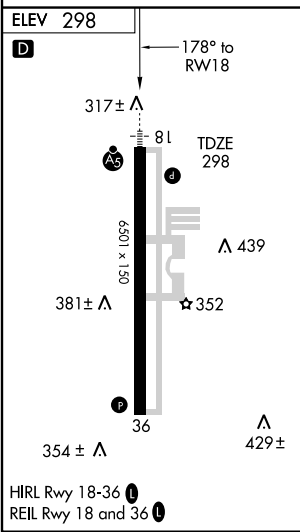
MISSED APPROACH:
Climb to 2000 direct REWYO and hold.

AWOS-3 128.325	HOUSTON CENTER 126.8 327.8	UNICOM 123.0 (CTAF) 0
--------------------------	--------------------------------------	---------------------------------



SC-4, 22 OCT 2009 to 19 NOV 2009

SC-4, 22 OCT 2009 to 19 NOV 2009



CATEGORY	A	B	C	D
LPV DA		640-1	342 (400-1)	
LNAV/VNAV DA		691-1	393 (400-1)	
LNAV MDA		680-1	382 (400-1)	
CIRCLING	740-1¼ 442 (500-1¼)	760-1¼ 462 (500-1¼)	760-1½ 462 (500-1½)	860-2 562 (600-2)