

WAAS CH 56610 W27A	APP CRS 275°	Rwy Idg TDZE 752 Apt Elev 752	5005
--	------------------------	---	-------------

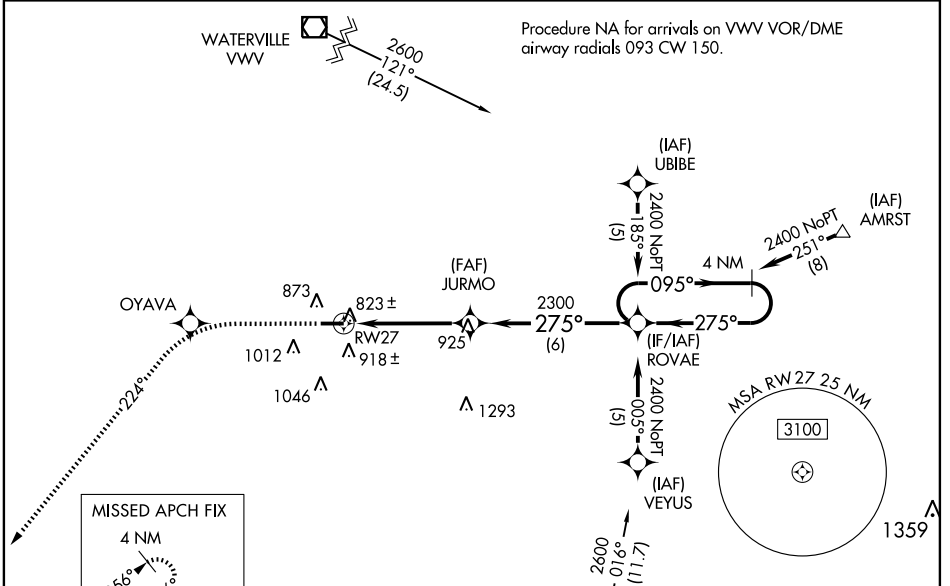
RNAV (GPS) RWY 27

FOSTORIA METROPOLITAN (FZI)

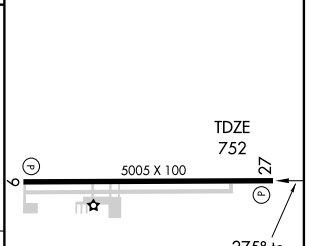
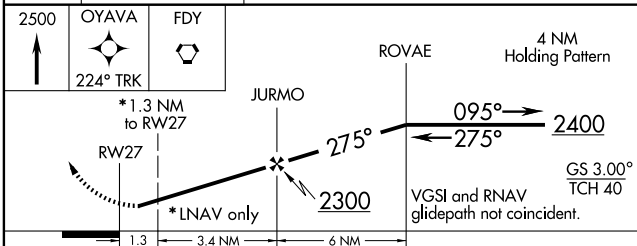
For uncompensated Baro-VNAV systems, LNAV/VNAV NA below -16°C (4°F) or above 54°C (130°F). DME/DME RNP-0.3 NA. Visibility reduction by helicopters NA. When local altimeter setting not received, use Findlay altimeter setting and increase all DA 47 feet and all MDA 60 feet, increase LPV all Cats and LNAV/VNAV all Cats and Circling Cat C visibility ¼ mile. Baro-VNAV and VDP NA when using Findlay altimeter setting.

MISSED APPROACH: Climb to 2500 direct OYAVA and via 224° track to FDY VORTAC and hold.

AWOS-3 124,625	TOLEDO APP CON 126.1 307.0	UNICOM 122.7 (CTAF)
--------------------------	--------------------------------------	-------------------------------



ELEV 752



CATEGORY	A	B	C	D
LPV DA	1036-1	284 (300-1)		NA
LNAV/VNAV DA	1161-1½	409 (500-1½)		NA
LNAV MDA	1180-1	428 (500-1)	1180-1¼ 428 (500-1¼)	NA
CIRCLING	1300-1 548 (600-1)	1320-1 568 (600-1)	1320-1½ 568 (600-1½)	NA

REIL Rwy 9 and 27
MIRL Rwy 9-27

EC-2, 22 OCT 2009 to 19 NOV 2009

EC-2, 22 OCT 2009 to 19 NOV 2009