

RNAV (GPS) RWY 21

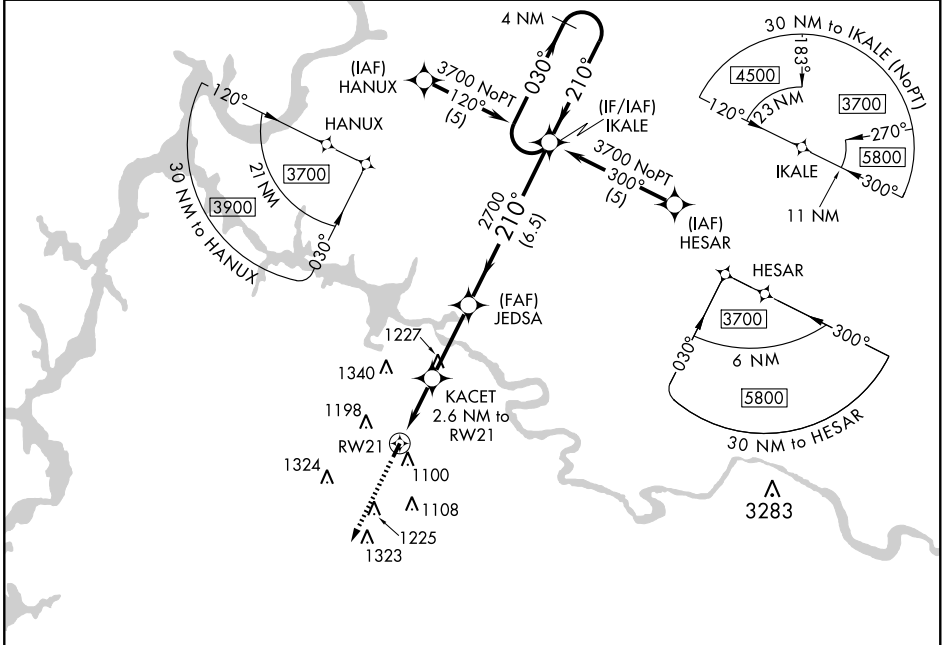
CLEVELAND/HARDWICK FIELD (HDI)

APP CRS	Rwy Idg	3300
210°	TDZE	874
	Apt Elev	874

Procedure NA at night. DME/DME RNP-0.3 NA.
 Use Athens altimeter setting; if not received, use Chattanooga altimeter setting and increase all MDAs 40 feet.

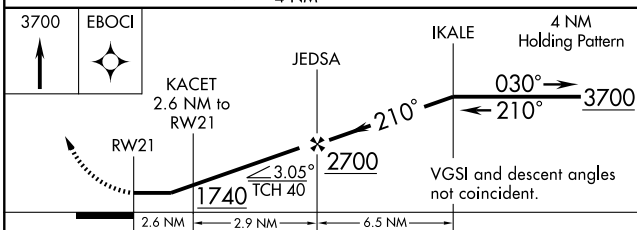
MISSED APPROACH: Climb to 3700 direct EBOCI and hold.

MCMINN COUNTY AWOS-3 125.425	CHATTANOOGA APP CON* 125.1 379.1	UNICOM 122.8 (CTAF)
--	--	-------------------------------



SE-1, 22 OCT 2009 to 19 NOV 2009

SE-1, 22 OCT 2009 to 19 NOV 2009



CATEGORY	A	B	C	D
LNVA MDA	1440-1	566 (600-1)	1440-1½ 566 (600-1½)	NA
CIRCLING	1520-1 646 (700-1)	1540-1 666 (700-1)	1540-1¾ 666 (700-1¾)	NA

