

# RNAV (GPS) RWY 19

PERU MUNI (I76)

APP CRS <b>189°</b>	Rwy Idg <b>4400</b>
	TDZE <b>779</b>
	Apt Elev <b>779</b>

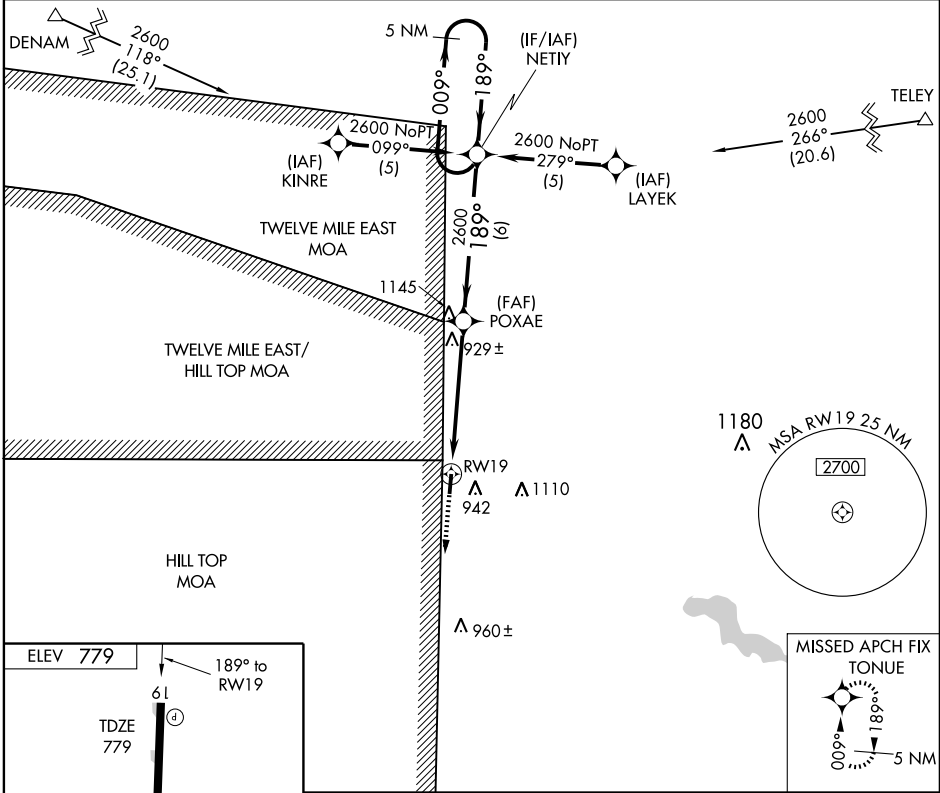
**▼** DME/DME RNP-0.3 NA. Procedure NA at night. Use Kokomo altimeter setting; if not received use **▲ NA** Warsaw altimeter setting and increase all MDAs 60 feet.

MISSED APPROACH: Climb to 2600 direct TONUE and hold.

KOKOMO AWOS-3  
**113.5**

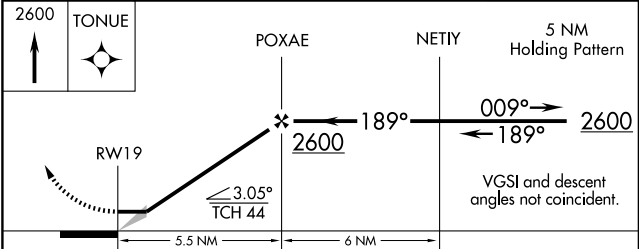
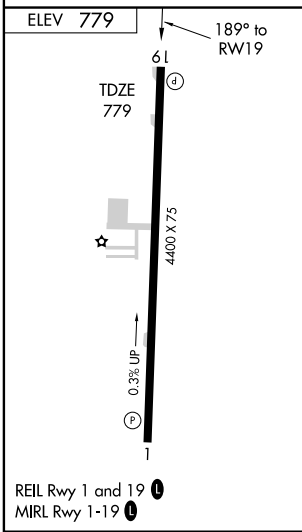
GRISSOM APP CON \*  
**121.05 379.3**

UNICOM  
**122.8** (CTAF) **①**



EC-2, 22 OCT 2009 to 19 NOV 2009

EC-2, 22 OCT 2009 to 19 NOV 2009



CATEGORY	A	B	C	D
LNAV MDA	1240-1	461 (500-1)	1240-1¼ 461 (500-1¼)	1240-1½ 461 (500-1½)
CIRCLING	1300-1	521 (600-1)	1300-1½ 521 (600-1½)	1340-2 561 (600-2)