

BENTONVILLE, ARKANSAS

AL-6126 (FAA)

VOR-A

BENTONVILLE MUNI/LOUISE M. THADEN FIELD (VBT)

VORTAC RZC <b>116.4</b> Chan 111	APP CRS <b>317°</b>	Rwy Idg TDZE Apt Elev	<b>N/A</b> <b>N/A</b> <b>1296</b>
--	------------------------	-----------------------------	---

▼  
▲ NA

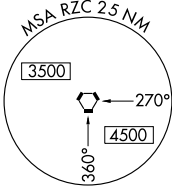
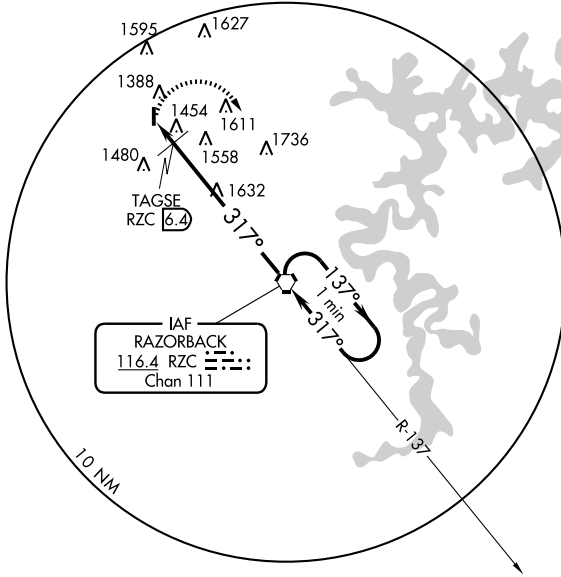
MISSED APPROACH: Climbing right turn to 3100 direct RZC VORTAC and hold.

AWOS-3  
**134.975**

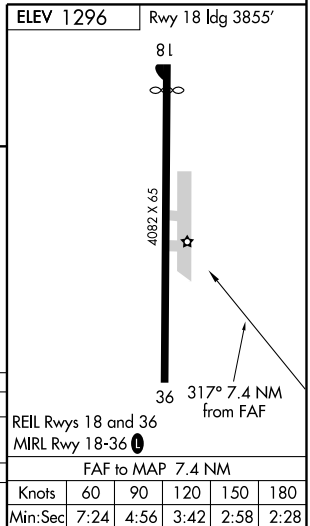
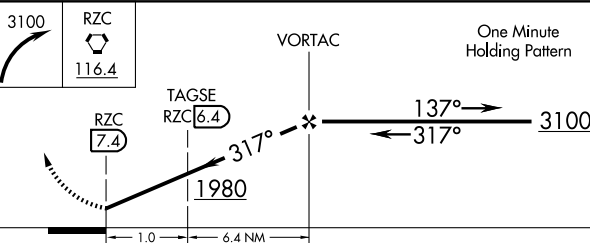
RAZORBACK APP CON \*  
**121.0 (WEST) 244.57**

CLNC DEL  
**121.05 263.12**

UNICOM  
**122.8 (CTAF) 0**



▲ 2333



CATEGORY	A	B	C	D
CIRCLING	1980-1 684 (700-1)	1980-2 684 (700-2)	1980-2 1/4 684 (700-2 1/4)	1980-2 1/4 684 (700-2 1/4)
TAGSE FIX MINIMUMS				
CIRCLING	1820-1 524 (600-1)	1820-1 1/2 524 (600-1 1/2)	1960-2 664 (700-2)	

BENTONVILLE, ARKANSAS  
Amdt 12 08213

BENTONVILLE MUNI/LOUISE M. THADEN FIELD (VBT)  
36° 21' N-94° 13' W

VOR-A

SC-1, 22 OCT 2009 to 19 NOV 2009

SC-1, 22 OCT 2009 to 19 NOV 2009