

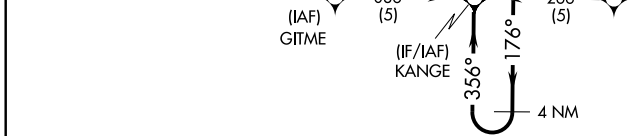
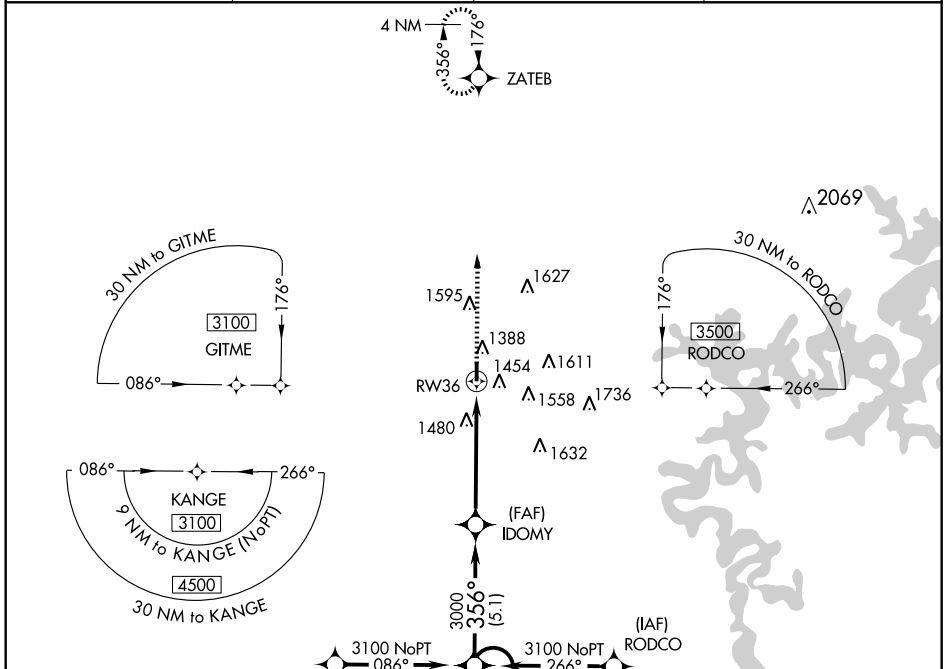
RNAV (GPS) RWY 36

BENTONVILLE MUNI/LOUISE M. THADEN FIELD (VBT)

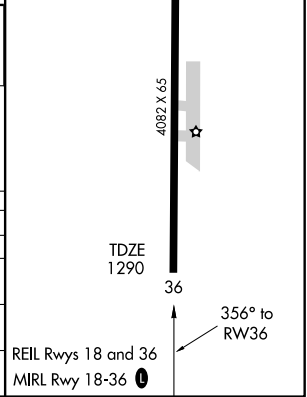
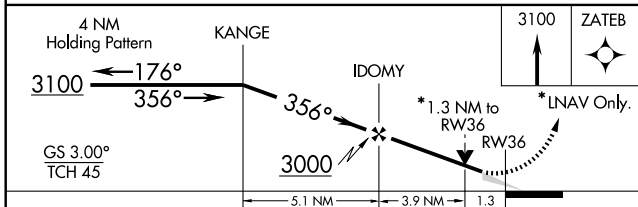
APP CRS	Rwy Idg	4082
356°	TDZE	1290
	Apt Elev	1296

▼ NA	Baro-VNAV NA below -17°C (-2°F). GPS or RNP-0.3 required. DME/DME RNP -0.3 NA.	MISSED APPROACH: Climb to 3100 direct ZATEB WP and hold.
-------------	---	--

AWOS-3 134.975	RAZORBACK APP CON ★ 121.0 (WEST) 244.57	CLNC DEL 121.05 263.12	UNICOM 122.8 (CTAF) 0
--------------------------	---	----------------------------------	---------------------------------



ELEV 1296	Rwy Idg 3855'
-----------	---------------



CATEGORY	A	B	C	D
GLS PA DA	NA			
LNAV/VNAV DA	1700-1½	410 (500-1½)		
LNAV MDA	1740-1 450 (500-1)	1740-1¼ 450 (500-1¼)	1740-1½ 450 (500-1½)	
CIRCLING	1820-1½ 524 (600-1½)		1960-2 664 (700-2)	

RNAV (GPS) RWY 36

SC-1, 22 OCT 2009 to 19 NOV 2009

SC-1, 22 OCT 2009 to 19 NOV 2009