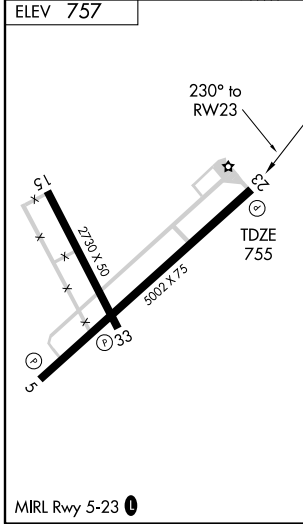
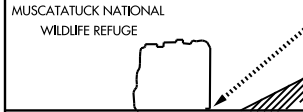
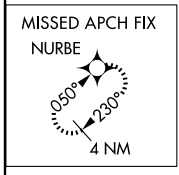
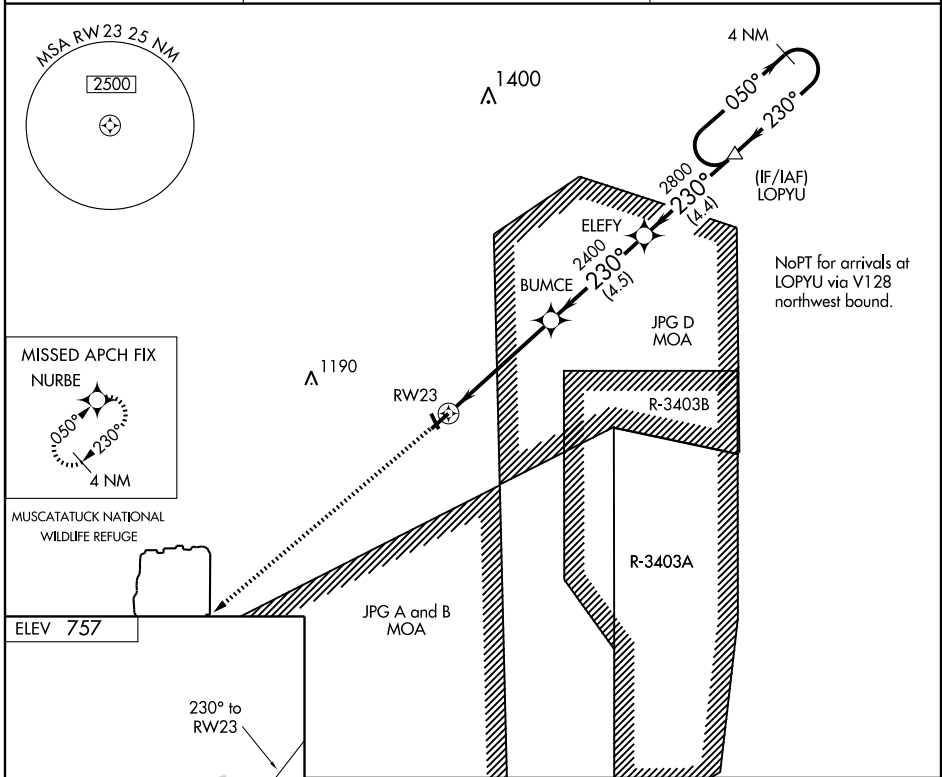


RNAV (GPS) Z RWY 23

NORTH VERNON (OVO)

WAAS CH 63113 W23A	APP CRS 230°	Rwy Idg 5002 TDZE 755 Apt Elev 757
--	------------------------	---

<p>▽ DME/DME RNP-0.3 NA. Circling requires descent on GP to MDA. When local altimeter setting not received, use Shelbyville altimeter setting and increase all DA 84 feet, all MDA 100 feet, increase LPV all Cats and Circling Cat A/B visibility ¼ mile.</p> <p>▲ NA</p>	<p>MISSED APPROACH: Climb to 2700 direct NURBE and hold.</p>	
<p>AWOS-3 120.625</p>	<p>INDIANAPOLIS CENTER 124.775 269.45</p>	<p>UNICOM 122.7 (CTAF) ①</p>



2700	NURBE	VGSJ and RNAV glidepath not coincident.		4 NM Holding Pattern
		BUMCE	ELEFY	LOPYU
		2400	2800	2800
		230°	050°	230°
		5 NM	4.5 NM	4.4 NM
CATEGORY	A	B	C	D
LPV DA	1005-1 250 (300-1)			NA
CIRCLING	1180-1 423 (500-1)	1220-1 463 (500-1)	1220-1½ 463 (500-1½)	NA

GS 3.00°
TCH 40

EC-2, 22 OCT 2009 to 19 NOV 2009

EC-2, 22 OCT 2009 to 19 NOV 2009