

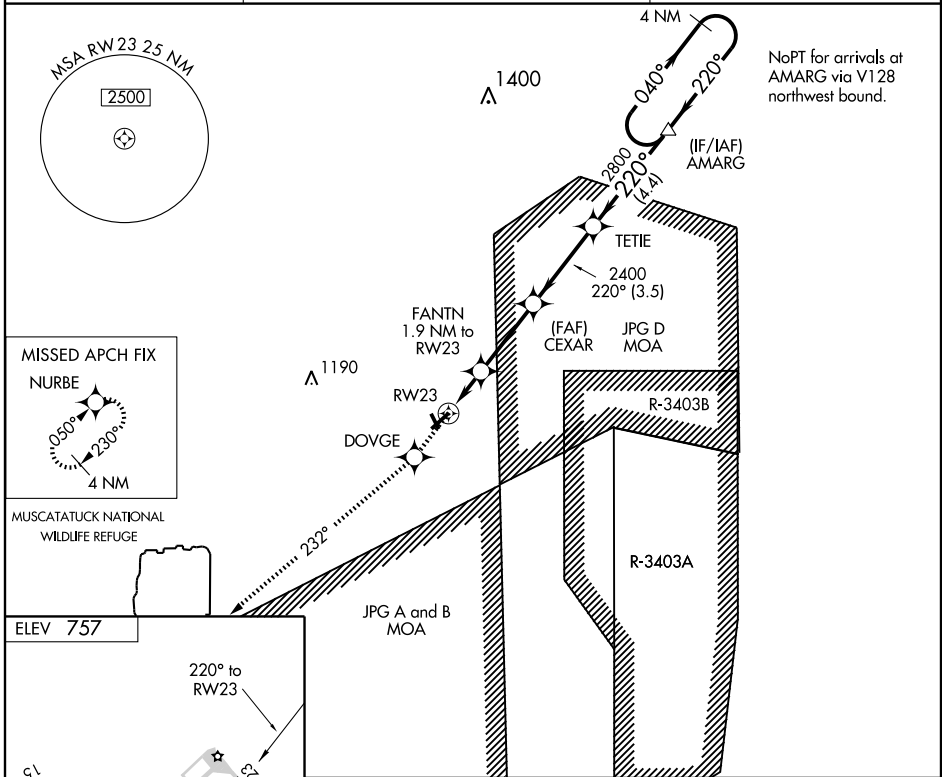
RNAV (GPS) Y RWY 23

NORTH VERNON (OVO)

APP CRS	Rwy Idg	5002
220°	TDZE	755
	Apt Elev	757

<p>▼ DME/DME RNP-0.3 NA. When local altimeter setting not received, use Shelbyville altimeter setting and increase all MDA 100 feet, increase LNAV Cat C visibility ¼ mile. ▲ NA VDP NA when using Shelbyville altimeter setting.</p>	<p>MISSED APPROACH: Climb to 2700 direct DOVGE and via track 232° to NURBE and hold.</p>
---	--

AWOS-3 120.625	INDIANAPOLIS CENTER 124.775 269.45	UNICOM 122.7 (CTAF) ☉
--------------------------	--	---------------------------------



	2700	DOVGE	TRK 232°	NURBE	CEXAR	TETIE	AMARG	4 NM Holding Pattern
						2800	2800	040° → ← 220°
						2400		VGSI and descent angles not coincident.
CATEGORY		A		B		C		D
LNAV MDA		1120-1		365 (400-1)				NA
CIRCLING		1180-1 423 (500-1)		1220-1 463 (500-1)		1220-1½ 463 (500-1½)		NA

EC-2, 22 OCT 2009 to 19 NOV 2009

EC-2, 22 OCT 2009 to 19 NOV 2009