

# RNAV (GPS) RWY 5

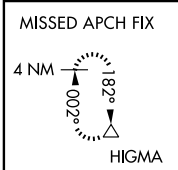
NORTH VERNON (OVO)

WAAS CH <b>70713</b> <b>W05A</b>	APP CRS <b>050°</b>	Rwy Idg TDZE <b>5002</b> <b>757</b> Apt Elev <b>757</b>
--	------------------------	--

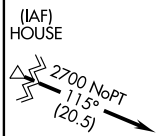
▼ For uncompensated Baro-VNAV systems, LNAV/VNAV NA below -16°C (4°F) or above 54°C (130°F). DME/DME RNP-0.3 NA. Visibility reduction by helicopters NA. When local altimeter setting not received, use Shelbyville altimeter setting and increase all DA 84 feet, all MDA 100 feet. Increase LPV, LNAV/VNAV all Cats and LNAV Cat C visibility ¼ mile. VDP and Baro-VNAV NA when using Shelbyville altimeter setting.

MISSED APPROACH: Climb to 2800 direct KONVY and via track 353° to HIGMA and hold.

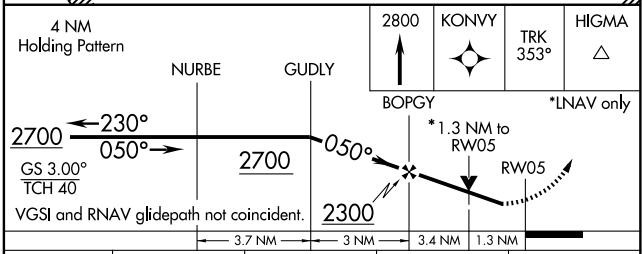
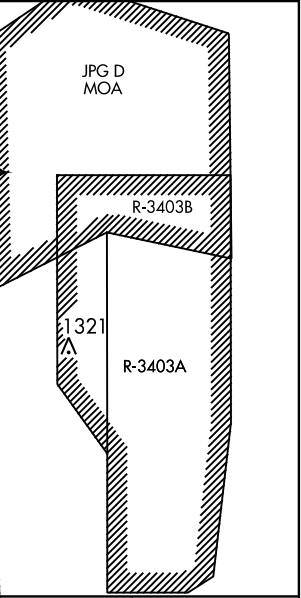
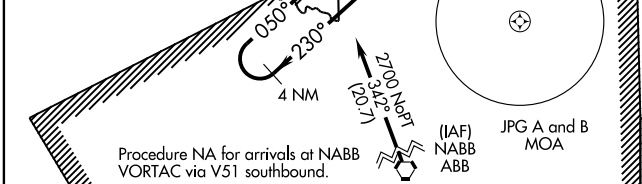
AWOS-3 <b>120.625</b>	INDIANAPOLIS CENTER <b>124.775 269.45</b>	UNICOM <b>122.7 (CTAF)</b>
--------------------------	--	-------------------------------



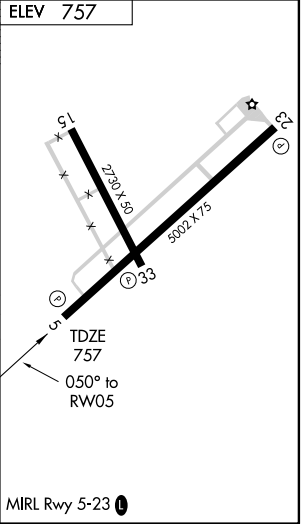
Procedure NA for arrivals at HOUSE via V53 northwest bound.



MUSCATATUCK NATIONAL WILDLIFE REFUGE



CATEGORY	A	B	C	D
LPV DA	1091-1¼	334 (400-1¼)		NA
LNAV/VNAV DA	1116-1¼	359 (400-1¼)		NA
LNAV MDA	1200-1	443 (500-1)	1200-1¼ 443 (500-1¼)	NA
CIRCLING	1200-1 443 (500-1)	1220-1 463 (500-1)	1220-1½ 463 (500-1½)	NA



EC-2, 22 OCT 2009 to 19 NOV 2009

EC-2, 22 OCT 2009 to 19 NOV 2009