

MURFREESBORO, TENNESSEE

AL-6123 (FAA)

RNAV (GPS) RWY 18

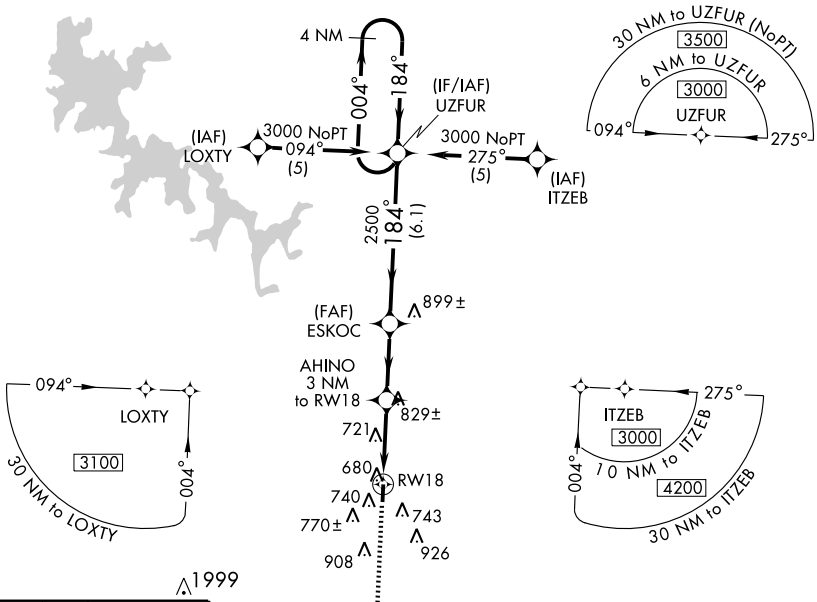
MURFREESBORO MUNI (MBT)

WAAS CH 48812 W18A	APP CRS 184°	Rwy Idg 3898 TDZE 612 Apt Elev 614
--	------------------------	---

Baro-VNAV NA when using Nashville Intl altimeter setting. For uncompensated Baro-VNAV systems, LNAV/VNAV NA below -16°C (4°F) or above 54°C (130°F). DME/DME RNP-0.3 NA. Visibility reduction by helicopters NA. When local altimeter setting not received, use Nashville Intl altimeter setting and increase all DA 51 feet, all MDA 60 feet, LPV and LNAV/VNAV all Cats. and LNAV Cats. C visibility ¼ mile. VDP NA when using Nashville Intl altimeter setting.

MISSED APPROACH: Climb to 3600 direct URACE and hold, continue climb-in-hold to 3600.

AWOS-3 133.975	NASHVILLE APP CON 118.4 360.7	GCO 135.075	UNICOM 122.7 (CTAF)
--------------------------	---	-----------------------	-------------------------------



SE-1, 22 OCT 2009 to 19 NOV 2009

SE-1, 22 OCT 2009 to 19 NOV 2009

ELEV 614

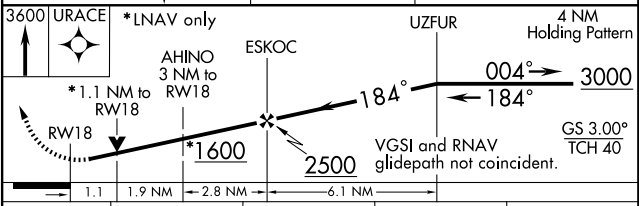
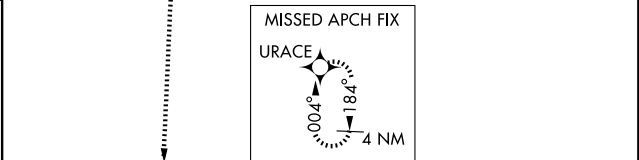
184° to RW18

81

TDZE 612

3898 X 100

36



CATEGORY	A	B	C	D
LPV DA	904-1 292 (300-1)			NA
LNAV/VNAV DA	950-1¼ 338 (400-1¼)			NA
LNAV MDA	980-1 368 (400-1)			NA
CIRCLING	1080-1	466 (500-1)	1080-1½	466 (500-1½)

MURFREESBORO, TENNESSEE
Amdt 1 09071

35° 53' N - 86° 23' W

RNAV (GPS) RWY 18