

# RNAV (GPS) RWY 23

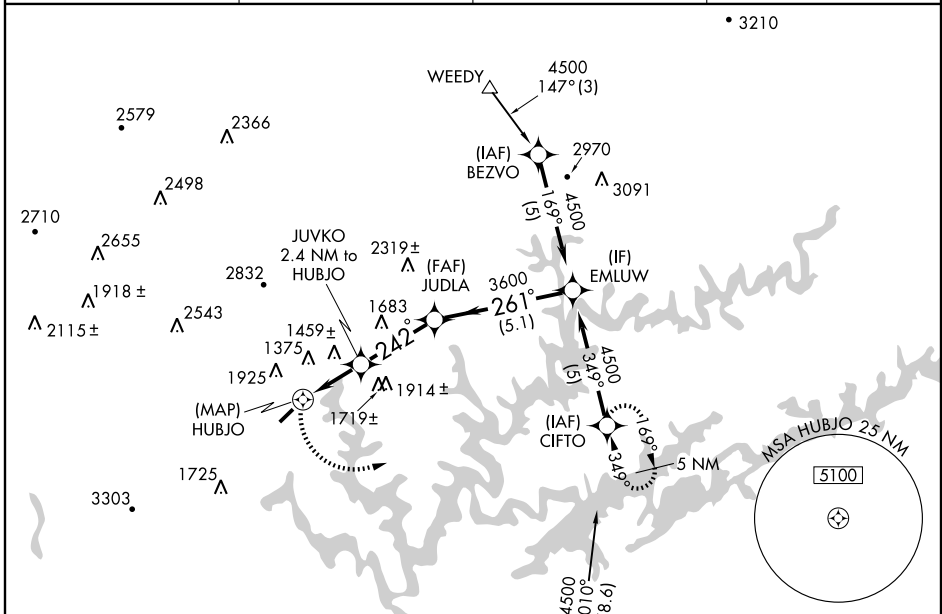
JACKSBORO/CAMPBELL COUNTY (JAU)

APP CRS	Rwy Idg	<b>4000</b>
<b>242°</b>	TDZE	<b>1180</b>
	Apt Elev	<b>1180</b>

**▽** DME/DME RNP-0.3 NA. Circling NA at night.  
**△** VDP NA when using McGhee-Tyson altimeter setting.  
 If local altimeter setting not received, use McGhee-Tyson altimeter setting and increase all MDAs 120 feet.  
 Circling NA Northwest of Rwy 5 and 23.

**MISSED APPROACH:** Climbing left turn to 4500 direct CIFTO and hold, continue climb-in-hold to 4500.

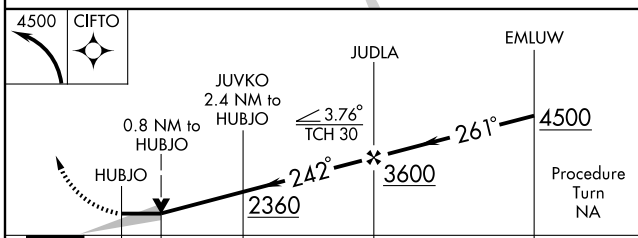
AWOS-3 <b>124.975</b>	ATLANTA CENTER <b>133.6 254.3</b>	GCO <b>121.725</b>	UNICOM <b>122.8</b> (CTAF)
--------------------------	--------------------------------------	-----------------------	-------------------------------



SE-1, 22 OCT 2009 to 19 NOV 2009

SE-1, 22 OCT 2009 to 19 NOV 2009

ELEV	<b>1180</b>
------	-------------



CATEGORY	A	B	C	D
LNAV MDA	1720-1	540 (600-1)	NA	NA
CIRCLING	1800-1 620 (700-1)	1840-1 660 (700-1)	NA	NA

MIRL Rwy 5-23  
REIL Rwy 5 and 23