

FALFURRIAS, TEXAS

AL-6117 (FAA)

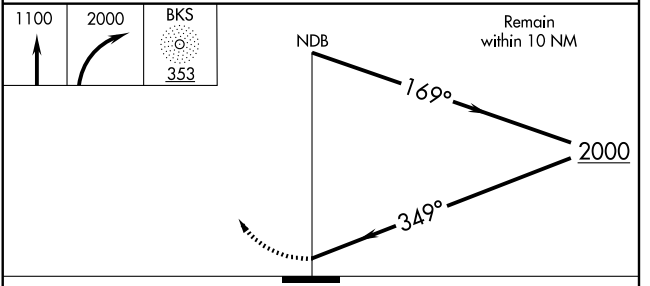
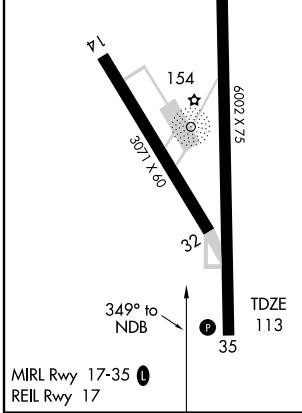
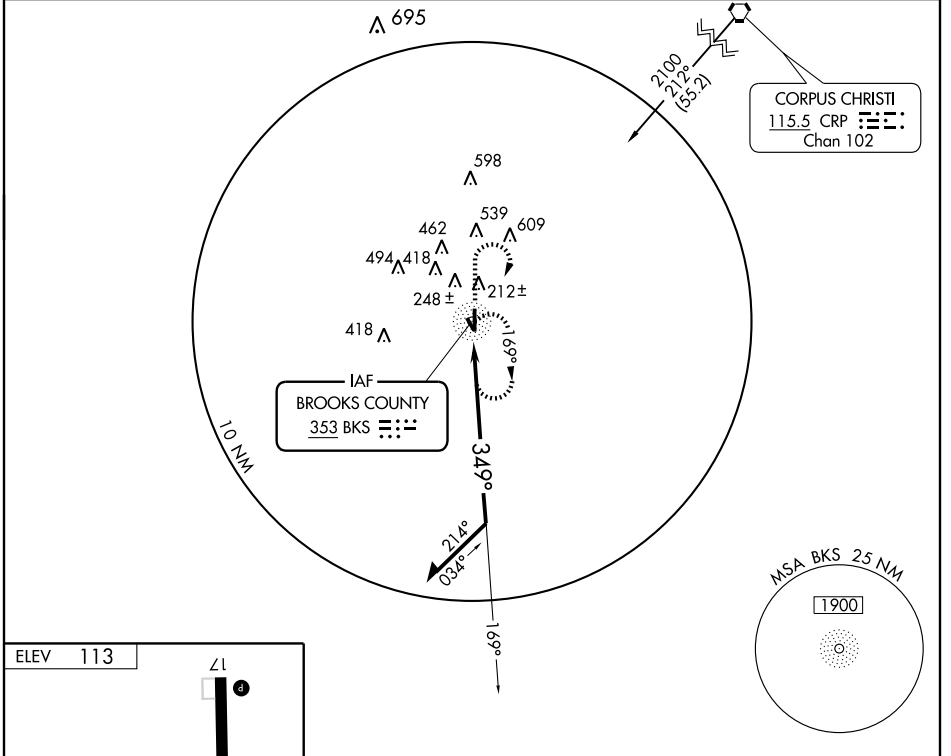
NDB BKS <b>353</b>	APP CRS <b>349°</b>	Rwy Idg <b>6002</b> TDZE <b>113</b> Apt Elev <b>113</b>
-----------------------	------------------------	---

# NDB RWY 35

FALFURRIAS/ BROOKS COUNTY (BKS)

**▽** Visibility reduction by helicopters NA. When local altimeter setting not received, use Alice altimeter setting and increase all MDA 100 feet and increase Cats C and D visibility ¼ mile. Circling NA for Cat D west of Rwy 17-35.  
**△ NA** MISSED APPROACH: Climb to 1100 then climbing right turn to 2000 direct BKS NDB and hold.

AWOS-3 <b>118.125</b>	KINGSVILLE APP CON * <b>119.9 290.45</b>	UNICOM <b>122.8 (CTAF) 0</b>
--------------------------	---	---------------------------------



CATEGORY	A	B	C	D
S-35	740-1	627 (700-1)	740-1¾ 627 (700-1¾)	740-2 627 (700-2)
CIRCLING	740-1	627 (700-1)	740-1¾ 627 (700-1¾)	740-2 627 (700-2)

FALFURRIAS, TEXAS  
Amdt 2 09295

27°12'N - 98°07'W

FALFURRIAS/ BROOKS COUNTY (BKS)

# NDB RWY 35

SC-3, 22 OCT 2009 to 19 NOV 2009

SC-3, 22 OCT 2009 to 19 NOV 2009