

# NDB or GPS RWY 19

ASHLAND COUNTY (3G4)

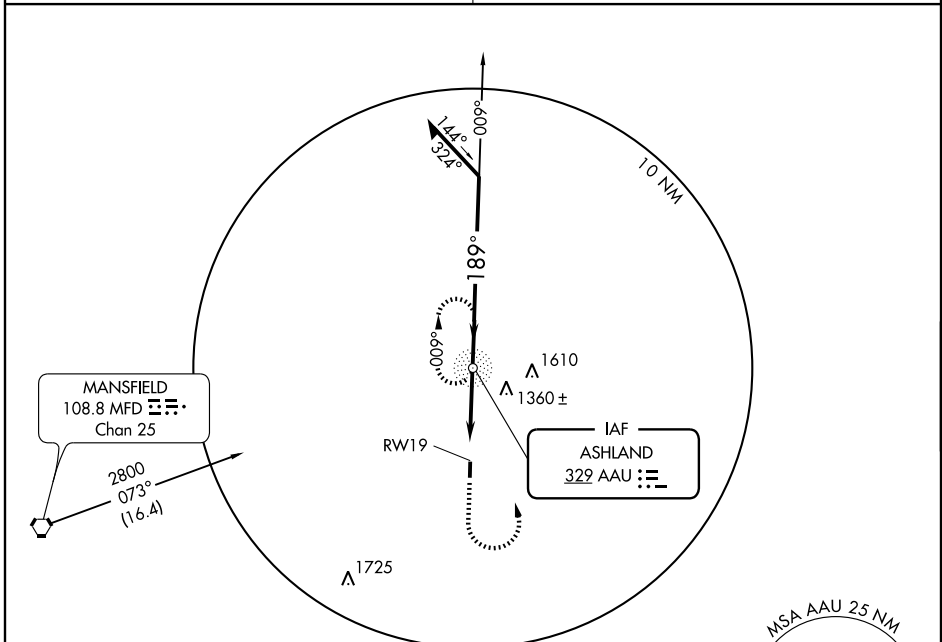
NDB AAU <b>329</b>	APP CRS <b>189°</b>	Rwy Idg TDZE Apt Elev	<b>3502</b> <b>1206</b> <b>1206</b>
-----------------------	------------------------	-----------------------------	---

**NA** If local altimeter setting not received, use Mansfield altimeter setting and increase all MDA's 60 feet.

**MISSED APPROACH:** Climb to 2800, then left turn direct AAU NDB and hold.

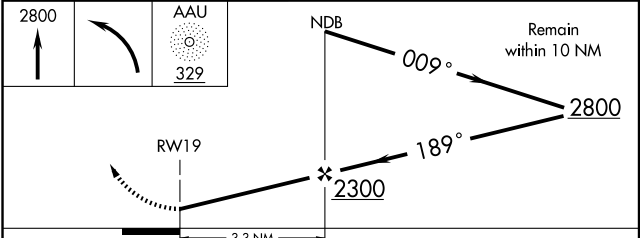
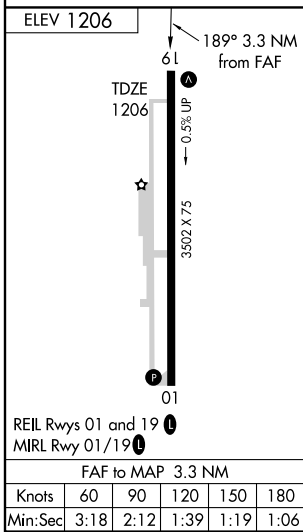
**MANSFIELD APP CON \***  
**124.2 390.8**

**UNICOM**  
**122.7 (CTAF) 0**



EC-2, 22 OCT 2009 to 19 NOV 2009

EC-2, 22 OCT 2009 to 19 NOV 2009



CATEGORY	A	B	C	D
S-19	1640-1	434 (500-1)	1640-1¼ 434 (500-1¼)	NA
CIRCLING	1640-1 434 (500-1)	1660-1 454 (500-1)	1660-1½ 454 (500-1½)	NA