

RNAV (GPS) RWY 34

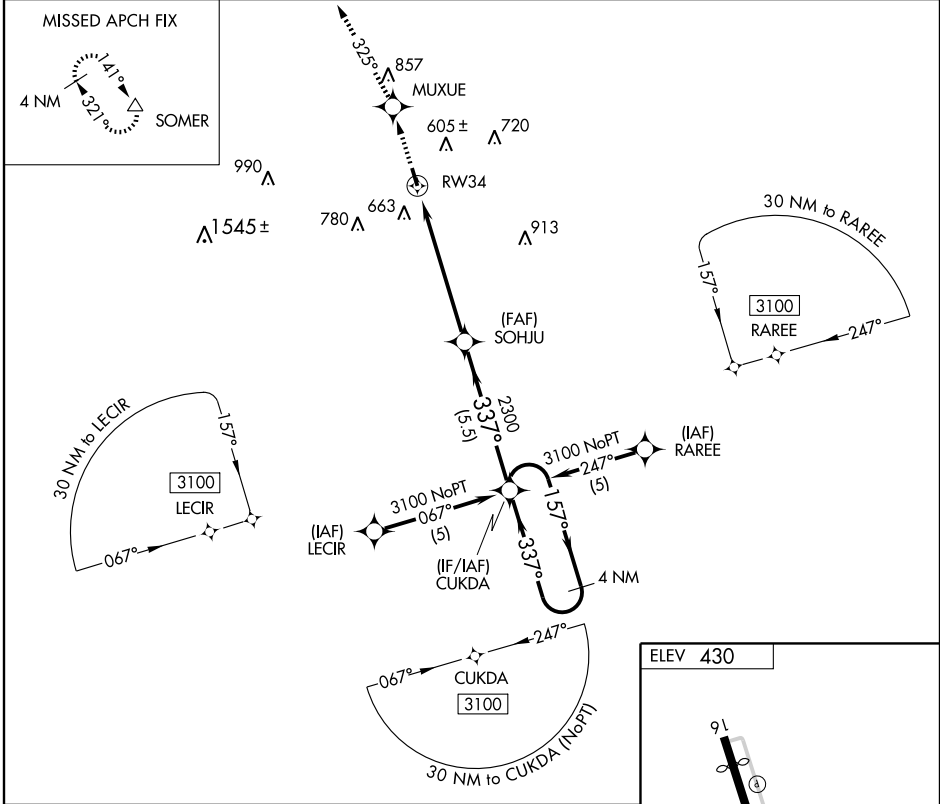
PLEASANTON MUNI (P/E/Z)

APP CRS 337°	Rwy Idg 4000
	TDZE 425
	Apt Elev 430

⚠ DME/DME RNP-0.3 NA. Visibility reduction by helicopters NA.
⚠ When local altimeter setting not received, use Lackland AFB altimeter setting and increase all MDA 100 feet.

MISSED APPROACH: Climb to 3000 direct MUXUE and via 325° track to SOMER and hold.

AWOS-3 118.575	SAN ANTONIO APP CON 118.05 353.5	CLNC DEL 126.55	UNICOM 122.7 (CTAF)
--------------------------	--	---------------------------	-------------------------------



SC-3, 22 OCT 2009 to 19 NOV 2009

SC-3, 22 OCT 2009 to 19 NOV 2009

3000 \uparrow	MUXUE \star	325° TRK	SOMER Δ
RW34		SOHJU	CUKDA 4 NM Holding Pattern
3.05° TCH 35		337°	3100
5.8 NM		5.5 NM	
CATEGORY	A	B	C D
LNVA MDA	960-1	535 (600-1)	NA
CIRCLING	1020-1	590 (600-1)	NA

