

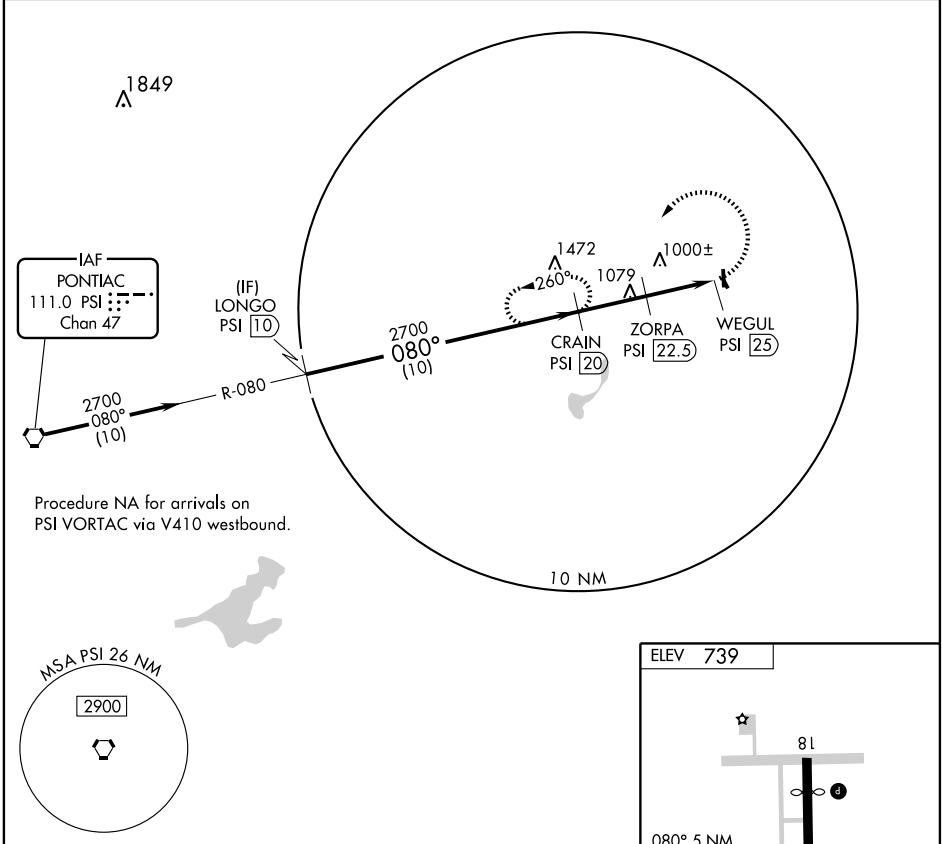
VORTAC PSI <b>111.0</b> Chan <b>47</b>	APP CRS <b>080°</b>	Rwy Idg TDZE Apt Elev	<b>N/A</b> <b>N/A</b> <b>739</b>
--	------------------------	-----------------------------	--

**VOR/DME-A**  
ROMEO STATE (D98)

**▼** Use Coleman A. Young Muni altimeter setting, if not received  
**▲ NA** use Pontiac altimeter setting and increase all MDA 20 feet.

MISSED APPROACH: Climbing left turn to 2700 via heading 190° and PSI VORTAC R-080 to CRAIN/20 DME and hold.

COLEMAN A. YOUNG MUNI ASOS <b>124.875</b>	SELFRIDGE APP CON * <b>119.6 395.9</b>	GCO <b>121.725</b>	UNICOM <b>122.8</b> (CTAF) <b>0</b>
--	---	-----------------------	--



EC-1, 22 OCT 2009 to 19 NOV 2009

EC-1, 22 OCT 2009 to 19 NOV 2009

