

RNAV (GPS) RWY 17

FAIRVIEW MUNI (6K4)

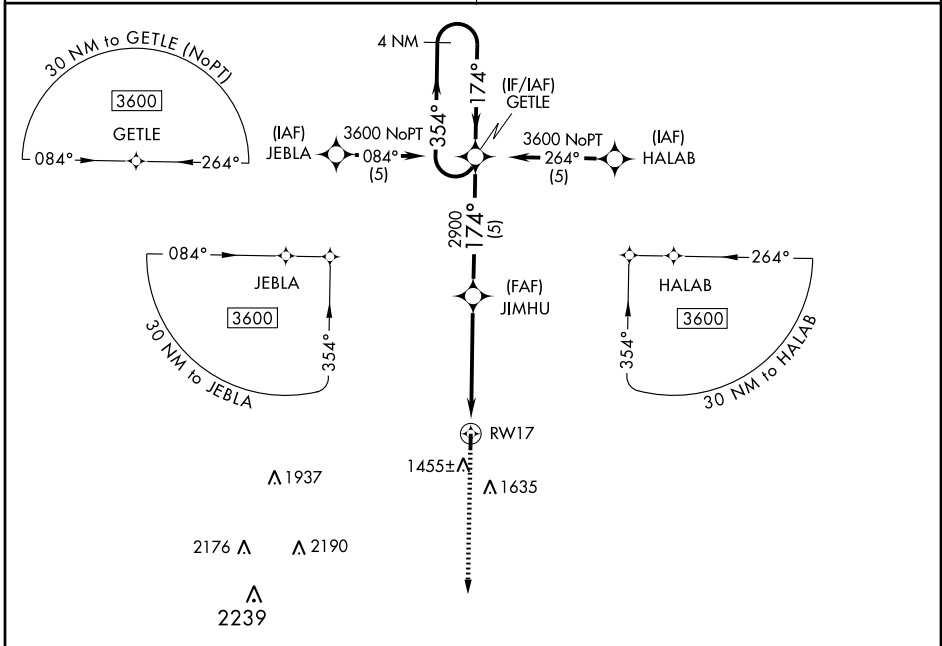
APP CRS 174°	Rwy Idg 3620 TDZE 1272 Apt Elev 1272
------------------------	---

▽ Use Vance AFB altimeter setting.
△ NA GPS or RNP-0.3 Required.
DME/DME RNP-0.3 NA.

MISSED APPROACH: Climb to 3100 direct CINOL WP and hold.

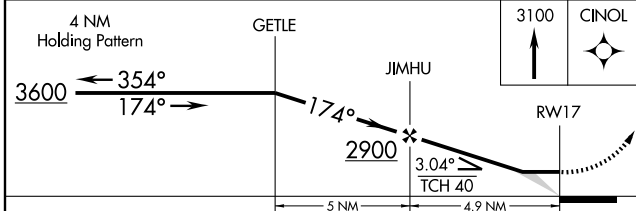
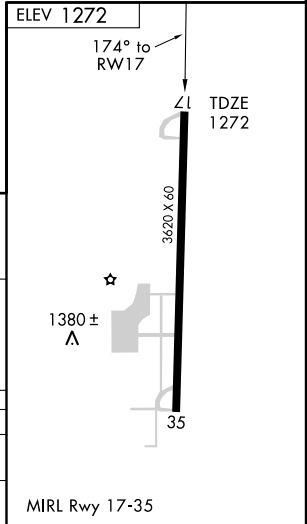
VANCE APP CON ★
120.525 244.875

UNICOM
122.8 (CTAF)



SC-1, 22 OCT 2009 to 19 NOV 2009

SC-1, 22 OCT 2009 to 19 NOV 2009



CATEGORY	A	B	C	D
LNVA MDA	1800-1	528 (600-1)	1800-1½ 528 (600-1½)	NA
CIRCLING	1880-1	608 (700-1)	2020-2¼ 748 (800-2¼)	NA