

APP CRS 017°	Rwy Idg 5217
	TDZE 3256
	Apt Elev 3264

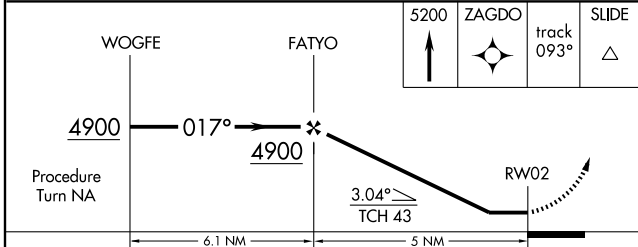
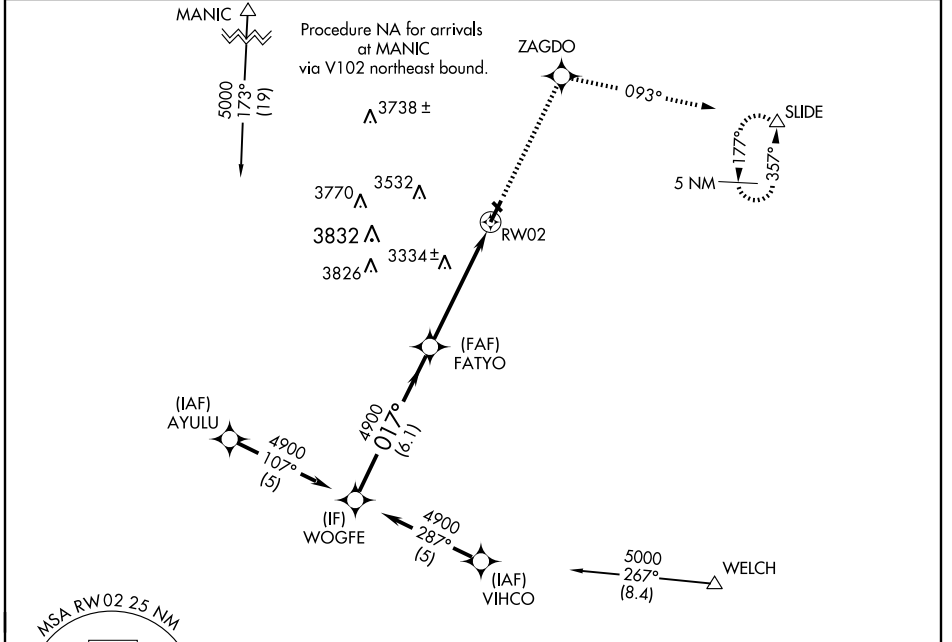
RNAV (GPS) RWY 2

BROWNFIELD/TERRY COUNTY (BFE)

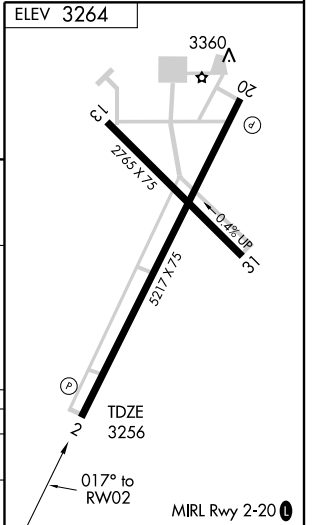
NA DME/DME RNP-0.3 NA. Visibility reduction by helicopters NA. Use Seminole altimeter setting, when not received, use Lubbock altimeter setting.

MISSED APPROACH: Climb to 5200 direct ZAGDO and via track 093° to SLIDE and hold.

SEMINOLE AWOS-3 118.075	LUBBOCK APP CON 119.9 335.6	UNICOM 122.8 (CTAF) 0
-----------------------------------	---------------------------------------	---------------------------------



CATEGORY	A	B	C	D
LNAV MDA	3680-1	424 (500-1)	3680-1¼	424 (500-1¼)
CIRCLING	3760-1	496 (500-1)	3780-1½ 516 (600-1½)	3920-2 656 (700-2)



SC-2, 22 OCT 2009 to 19 NOV 2009

SC-2, 22 OCT 2009 to 19 NOV 2009