

VOR/DME or GPS RWY 29

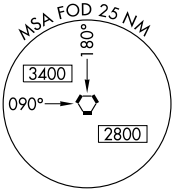
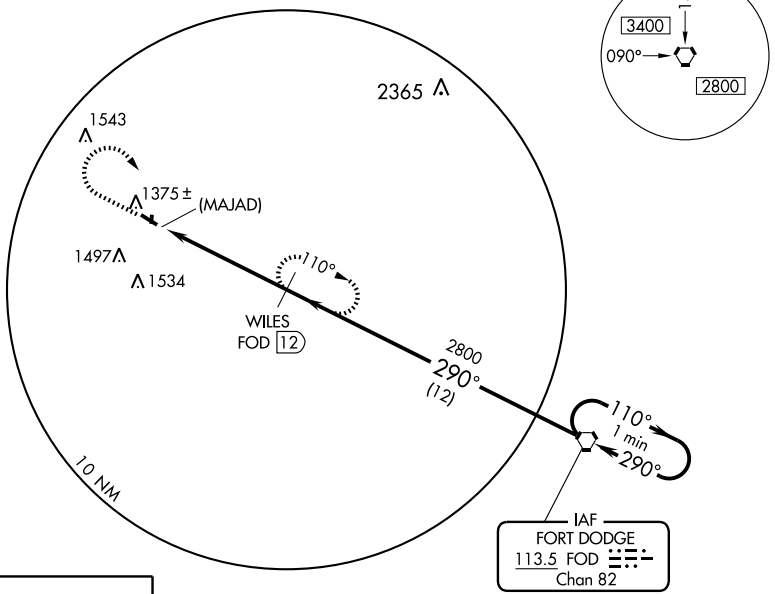
POCAHONTAS MUNI (POH)

VORTAC FOD 113.5 Chan 82	APP CRS 290°	Rwy Idg TDZE Apt Elev	4100 1222 1224
--	------------------------	-----------------------------	---

NA Use Fort Dodge altimeter setting. MISSED APPROACH: Climb to 2800 then right turn via FOD R-290 to WILES and hold.

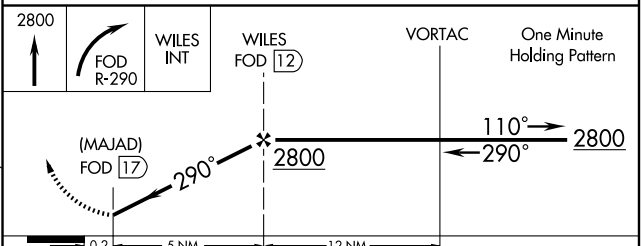
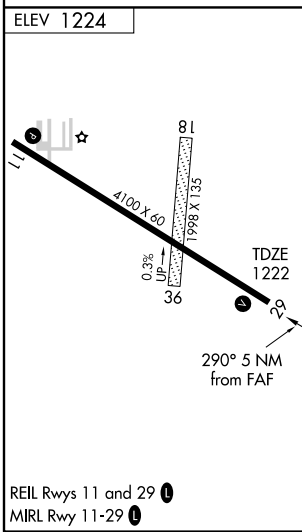
MINNEAPOLIS CENTER **134.0 288.3** UNICOM **122.8** (CTAF) **1**

No Procedure Turn for arrivals on radials 003 clockwise 215.



NC-3, 22 OCT 2009 to 19 NOV 2009

NC-3, 22 OCT 2009 to 19 NOV 2009



CATEGORY	A	B	C	D
S-29	1900-1	678 (700-1)	1900-2 678 (700-2)	NA
CIRCLING	1900-1 676 (700-1)	1940-1 716 (800-1)	1940-2 716 (800-2)	NA