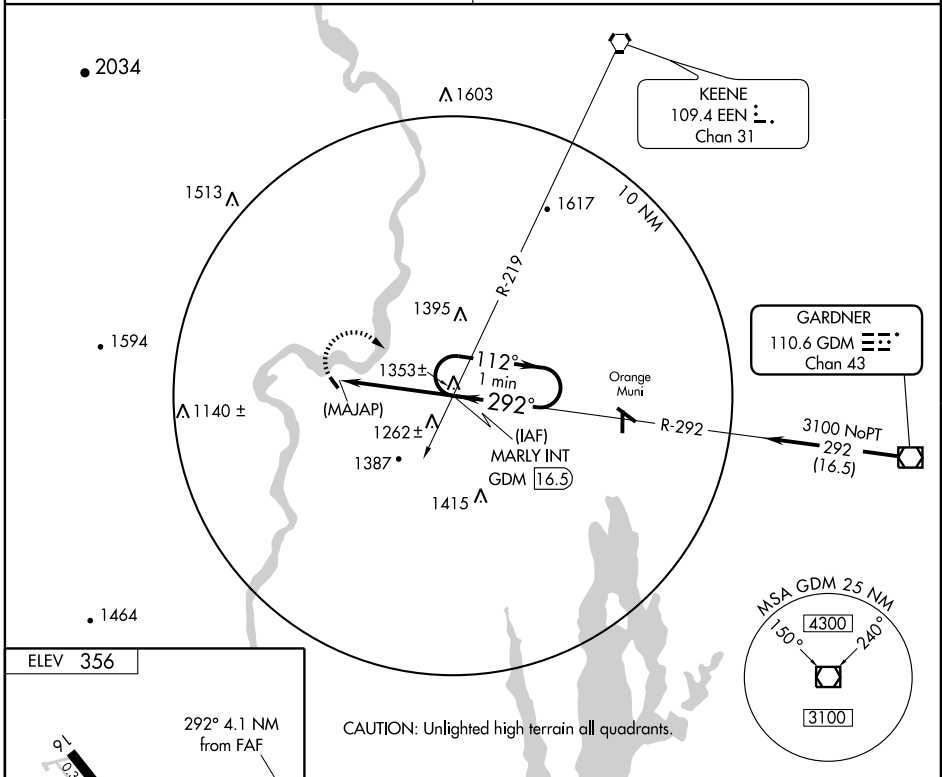


VOR/DME GDM 110.6 Chan 43	APP CRS 292°	Rwy Idg TDZE Apt Elev N/A 356
---	------------------------	--

VOR or GPS-A
MONTAGUE/ TURNERS FALLS (ØB5)

▼ Obtain local altimeter setting on CTAF; when not received, use Orange altimeter setting.
 ▲ NA MISSED APPROACH: Climbing right turn to 3100 via GDM R-292 to MARLY Int and hold.

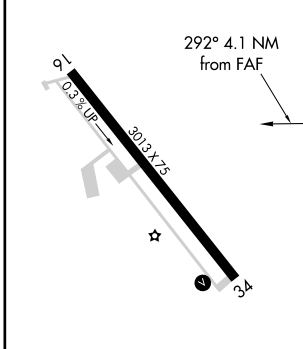
BOSTON CENTER **123.75 338.2** UNICOM **123.0** (CTAF) **Ø**



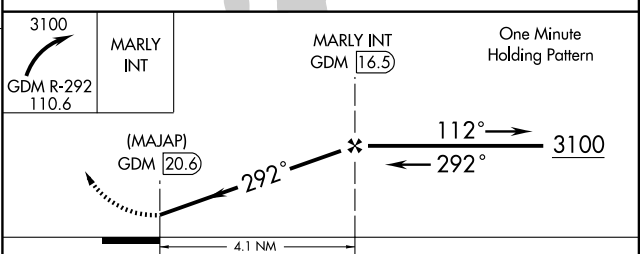
NE-1, 22 OCT 2009 to 19 NOV 2009

NE-1, 22 OCT 2009 to 19 NOV 2009

ELEV 356



CAUTION: Unlighted high terrain all quadrants.



REIL Rwy 34 Ø	MIRL Rwy 16-34 Ø				
FAF to MAP 4.1 NM					
Knots	60	90	120	150	180
Min:Sec	4:06	2:44	2:03	1:38	1:22

CATEGORY	A	B	C	D
CIRCLING	1520-1¼ 1164 (1200-1¼)	1520-1½ 1164 (1200-1½)	1520-3 1164 (1200-3)	NA
ORANGE ALTIMETER SETTING MINIMUMS				
CIRCLING	1580-1¼ 1224 (1300-1¼)	1580-1½ 1224 (1300-1½)	1580-3 1224 (1300-3)	NA