

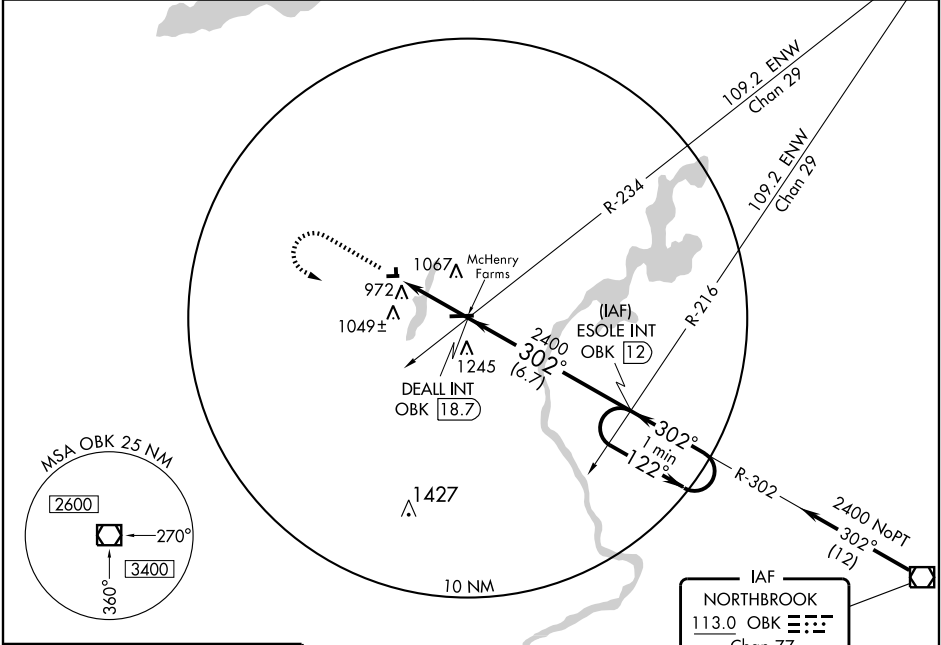
VOR/DME OBK 113.0 Chan 77	APP CRS 302°	Rwy ldg TDZE Apt Elev	N/A N/A 875
---	------------------------	--------------------------	--

AL-6106 (FAA)

VOR-A

GREENWOOD/GALT FIELD (10C)

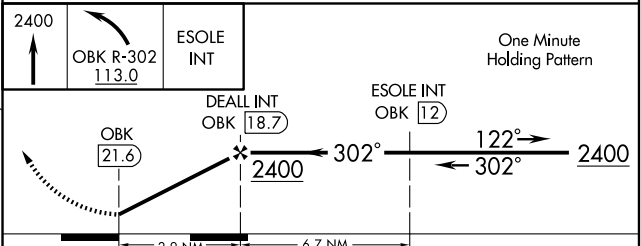
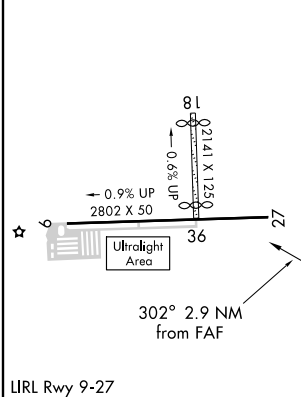
▲ NA Use Waukegan Rgnl altimeter setting.	MISSED APPROACH: Climb to 2400, then left turn via OBK R-302 to ESOLE INT/12 DME and hold.
CHICAGO APP CON 120.55 315.6	UNICOM 122.8 (CTAF)



EC-3, 22 OCT 2009 to 19 NOV 2009

EC-3, 22 OCT 2009 to 19 NOV 2009

ELEV 875	Rwy 18 ldg 1941' Rwy 36 ldg 1871'
----------	--------------------------------------



FAF to MAP 2.9 NM					
Knots	60	90	120	150	180
Min:Sec	2:54	1:56	1:27	1:10	0:58
CATEGORY	A	B	C	D	
CIRCLING	1440-1 565 (600-1)	1440-1/4 565 (600-1/4)	1440-1/2 565 (600-1/2)	NA	