

STAPLES, MINNESOTA

AL-6105 (FAA)

NDB or GPS RWY 14

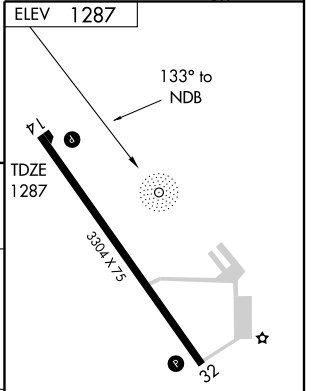
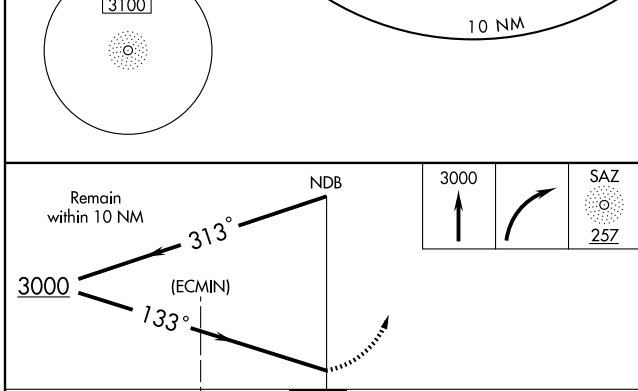
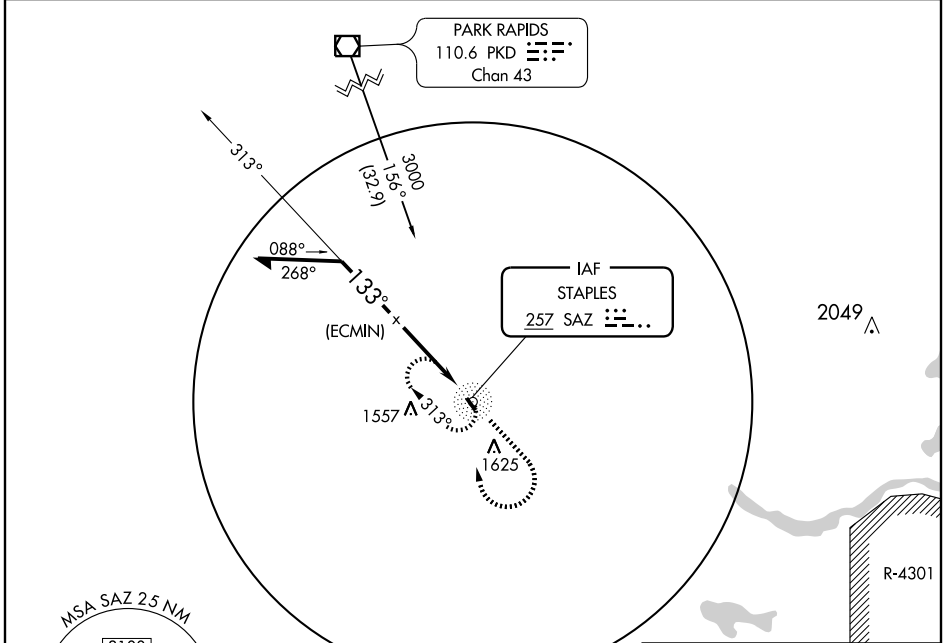
STAPLES MUNI (SAZ)

NDB SAZ 257	APP CRS 133°	Rwy Idg TDZE Apt Elev	3304 1287 1287
-----------------------	------------------------	-----------------------------	---

▽
▲ NA

MISSED APPROACH: Climb to 3000 then right turn direct SAZ NDB and hold.

AWOS-3 118.325	MINNEAPOLIS CENTER 118.05 239.0	GCO 121.725	CTAF 122.90
--------------------------	---	-----------------------	-----------------------



CATEGORY	A	B	C	D
S-14	1820-1	533 (600-1)	1820-1½ 533 (600-1½)	NA
CIRCLING	1820-1	533 (600-1)	1940-1¾ 653 (700-1¾)	NA

REIL Rwy 14 and 32
MIRL Rwy 14-32

STAPLES, MINNESOTA
Amdt 2A 09015

46°23'N-94°48'W

NDB or GPS RWY 14

NC-1, 22 OCT 2009 to 19 NOV 2009

NC-1, 22 OCT 2009 to 19 NOV 2009