

# RNAV (GPS) RWY 36

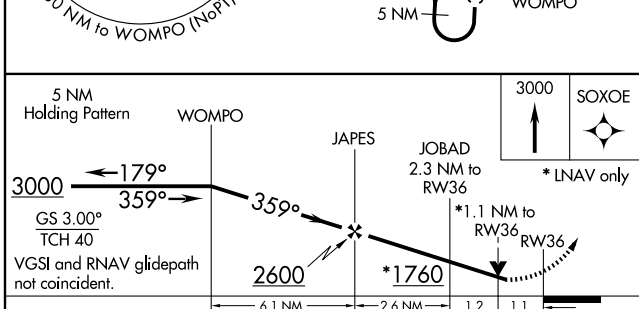
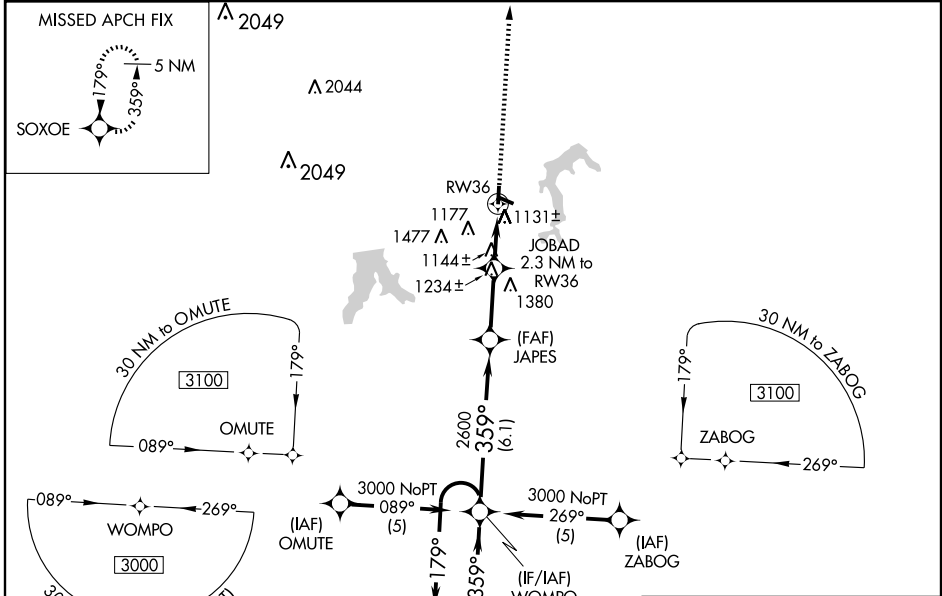
LEE'S SUMMIT MUNI (LXT)

WAAS CH <b>48805</b> <b>W36A</b>	APP CRS <b>359°</b>	Rwy Idg <b>4016</b> TDZE <b>998</b> Apt Elev <b>1004</b>
--	------------------------	--

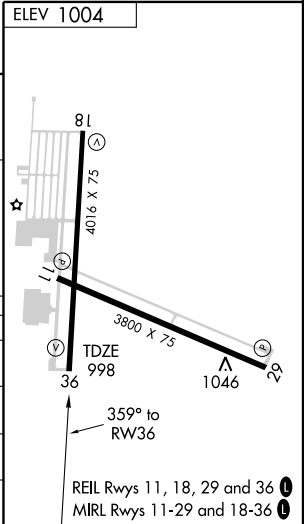
**▽** Baro-VNAV NA when using Charles B. Wheeler Downtown altimeter setting. For uncompensated Baro-VNAV systems, LNAV/VNAV NA below -17°C (2°F) or above 54°C (130°F). DME/DME RNP -0.3 NA. Visibility reduction by helicopters NA. VDP NA when using Charles B. Wheeler Downtown altimeter setting. If local altimeter setting not received, use Charles. B. Wheeler Downtown altimeter setting and increase all DAs 68 feet and all MDAs 80 feet.

**MISSED APPROACH:** Climb to 3000 direct SOXOE and hold.

ASOS <b>124.175</b>	KANSAS CITY APP CON <b>118.4 294.7</b>	CLNC DEL <b>118.45</b>	UNICOM <b>122.8 (CTAF)</b> <b>0</b>
------------------------	---	---------------------------	--



CATEGORY	A	B	C	D
LPV DA	1331-1¼	333 (400-1¼)		NA
LNAV/VNAV DA	1530-2	532 (600-2)		NA
LNAV MDA	1420-1	422 (500-1)	1420-1¼ 422 (500-1¼)	NA
CIRCLING	1440-1 436 (500-1)	1540-1 536 (600-1)	1540-1½ 536 (600-1½)	NA



NC-3, 22 OCT 2009 to 19 NOV 2009

NC-3, 22 OCT 2009 to 19 NOV 2009