

RNAV (GPS) RWY 29

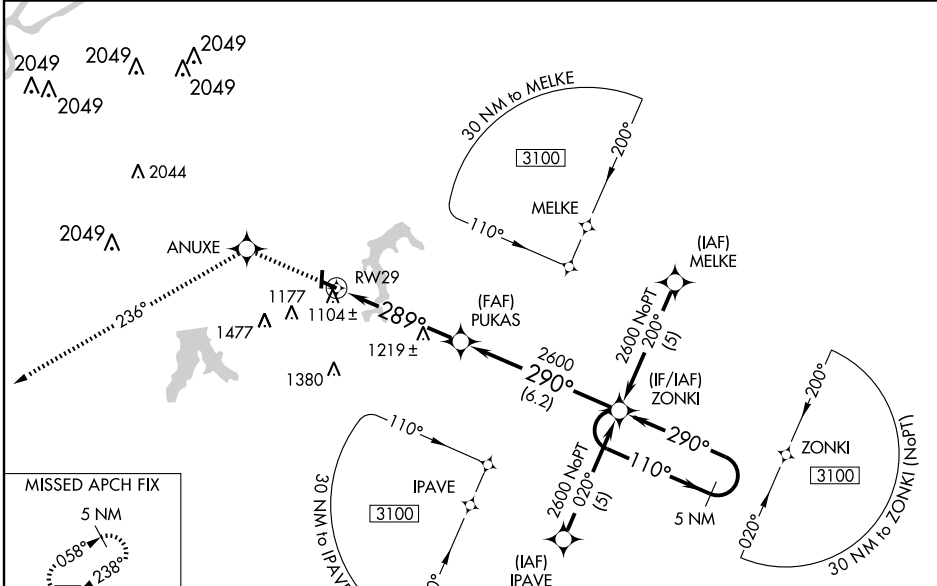
LEE'S SUMMIT MUNI (LXT)

| | | | |
|--|------------------------|-----------------------------|---|
| WAAS CH 48905 W29A | APP CRS 289° | Rwy Idg TDZE Apt Elev | 3800 1004 1004 |
|--|------------------------|-----------------------------|---|

Baro-VNAV NA when using Charles B. Wheeler Downtown altimeter setting. For uncompensated Baro-VNAV systems, LNAV/VNAV NA below -17°C (2°F) or above 54°C (130°F).
 DME/DME RNP -0.3 NA. Visibility reduction by helicopters NA.
 If local altimeter setting not received, use Charles B. Wheeler Downtown altimeter setting and increase all DAs 68 feet, and all MDAs 80 feet.

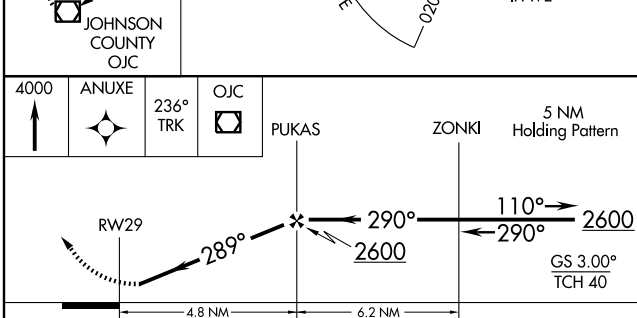
MISSED APPROACH: Climb to 4000 direct ANUXE and via 236° track to OJC VOR/DME and hold.

| | | | |
|------------------------|---|---------------------------|--|
| ASOS 124.175 | KANSAS CITY APP CON 118.4 294.7 | CLNC DEL 118.45 | UNICOM 122.8 (CTAF) 1 |
|------------------------|---|---------------------------|--|



NC-3, 22 OCT 2009 to 19 NOV 2009

NC-3, 22 OCT 2009 to 19 NOV 2009



| CATEGORY | A | B | C | D |
|--------------|----------------------|----------------------|----------------------|----|
| LPV DA | 1254-1 250 (300-1) | | | NA |
| LNAV/VNAV DA | 1374-1¼ 370 (400-1¼) | | | NA |
| LNAV MDA | 1480-1 476 (500-1) | 1480-1¼ 476 (500-1¼) | | NA |
| CIRCLING | 1480-1 476 (500-1) | 1540-1 536 (600-1) | 1540-1½ 536 (600-1½) | NA |

