

RNAV (GPS) RWY 18

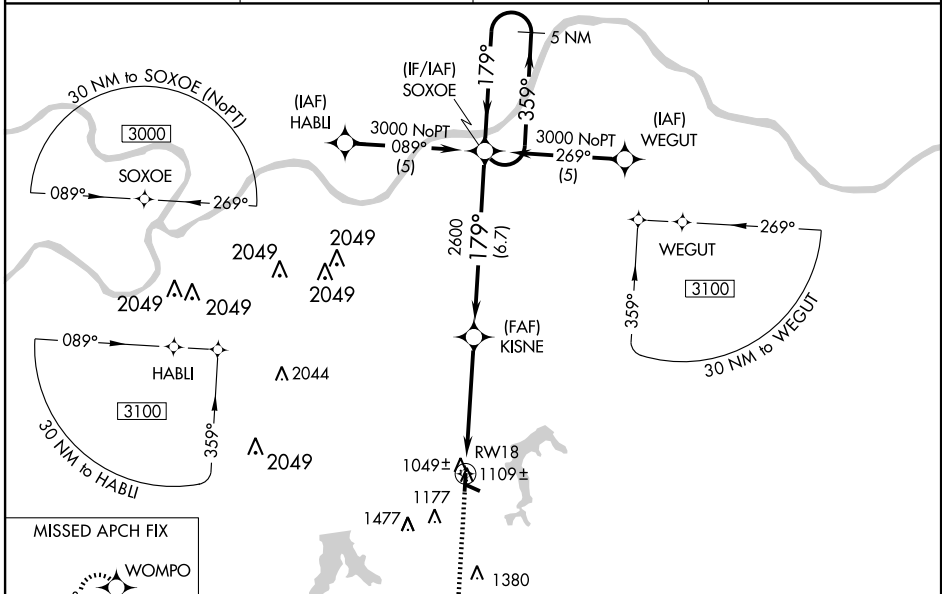
LEE'S SUMMIT MUNI (LXT)

WAAS CH 82204 W18A	APP CRS 179°	Rwy Idg TDZE Apt Elev	4016 998 1004
--	------------------------	-----------------------------	--

Baro-VNAV NA when using Charles B. Wheeler Downtown altimeter setting.
For uncompensated Baro-VNAV systems, LNAV/VNAV NA below -17°C (2°F) or above 54°C (130°F). Visibility reduction by helicopters NA.
If local altimeter setting not received, use Charles B. Wheeler Downtown altimeter setting and increase all DAs 68 feet, and all MDAs 80 feet.

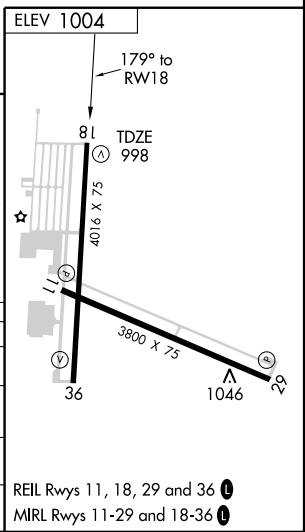
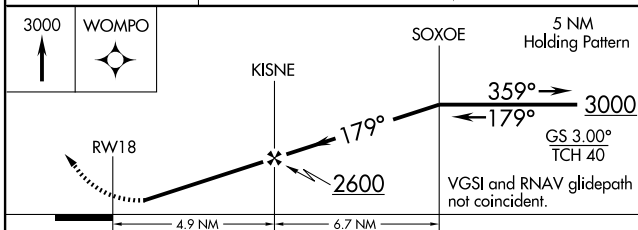
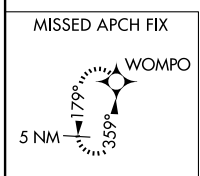
MISSED APPROACH: Climb to 3000 direct WOMPO and hold.

ASOS 124.175	KANSAS CITY APP CON 118.4 294.7	CLNC DEL 118.45	UNICOM 122.8 (CTAF) 0
------------------------	---	---------------------------	--



NC-3, 22 OCT 2009 to 19 NOV 2009

NC-3, 22 OCT 2009 to 19 NOV 2009



CATEGORY	A	B	C	D
LPV DA	1248-1	250 (300-1)		NA
LNAV/VNAV DA	1378-1¼	380 (400-1¼)		NA
LNAV MDA	1360-1	362 (400-1)		NA
CIRCLING	1440-1 436 (500-1)	1540-1 536 (600-1)	1540-1½ 536 (600-1½)	NA

REIL Rwy 11, 18, 29 and 36 **0**
MIRL Rwy 11-29 and 18-36 **0**