

RNAV (GPS) RWY 11

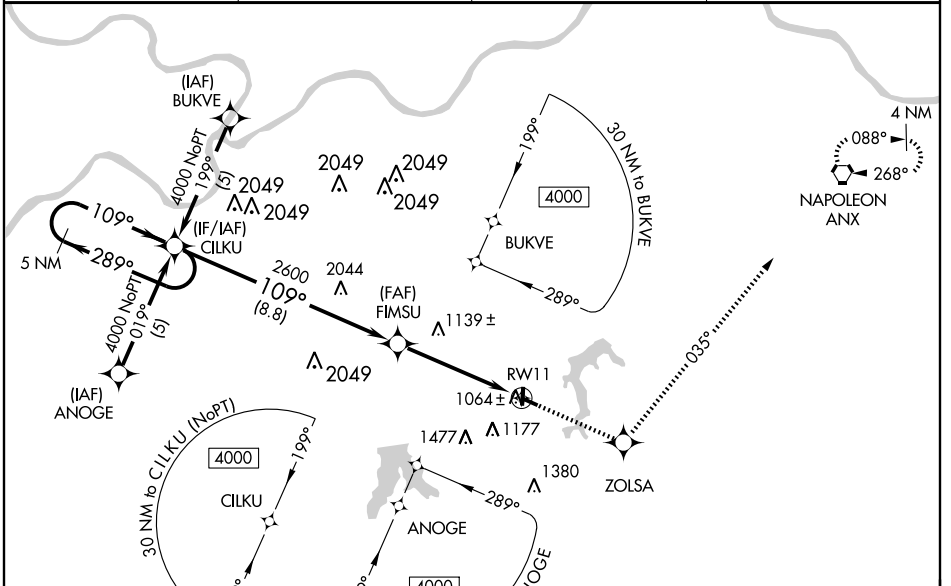
LEE'S SUMMIT MUNI (LXT)

WAAS CH 99405 W11A	APP CRS 109°	Rwy Idg 3800 TDZE 1004 Apt Elev 1004
--	------------------------	---

Baro-VNAV NA when using Charles B. Wheeler Downtown altimeter setting. For uncompensated Baro-VNAV systems, LNAV/VNAV NA below -17°C (2°F) or above 54°C (130°F).
 ⚠ DME/DME RNP -0.3 NA. Visibility reduction by helicopters NA.
 If local altimeter setting not received, use Charles B. Wheeler Downtown altimeter setting and increase all DAs 68 feet, and all MDAs 80 feet.

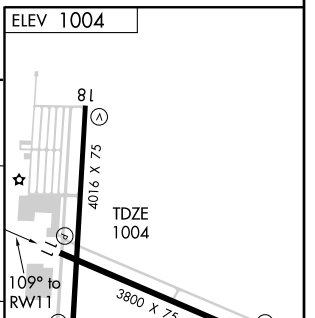
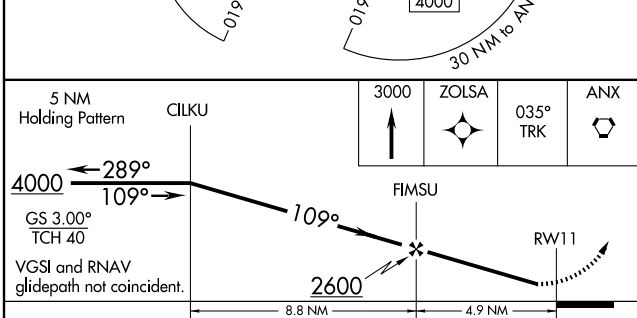
MISSED APPROACH: Climb to 3000 direct ZOLSA and via 035° track ANX VORTAC and hold.

ASOS 124.175	KANSAS CITY APP CON 118.4 294.7	CLNC DEL 118.45	UNICOM 122.8 (CTAF) 0
------------------------	---	---------------------------	---------------------------------



NC-3, 22 OCT 2009 to 19 NOV 2009

NC-3, 22 OCT 2009 to 19 NOV 2009



CATEGORY	A	B	C	D
LPV DA	1254-1	250 (300-1)		NA
LNAV/VNAV DA	1334-1¼	330 (400-1¼)		NA
LNAV MDA	1400-1	396 (400-1)		NA
CIRCLING	1440-1 436 (500-1)	1540-1 536 (600-1)	1540-1½ 536 (600-1½)	NA

REIL Rwy 11, 18, 29 and 36 0
 MRL Rwy 11-29 and 18-36 0