

RNAV (GPS) RWY 18

ST. CHARLES COUNTY SMARTT (S/E/T)

APP CRS 180°	Rwy Idg 3800 TDZE 436 Apt Elev 436
------------------------	---

▽ DME/DME RNP-0.3 NA.
▲ If local altimeter setting not received, use Lambert-St. Louis Intl altimeter setting and increase all MDAs 60 feet.
 VDP NA with Lambert-St Louis Intl altimeter setting.

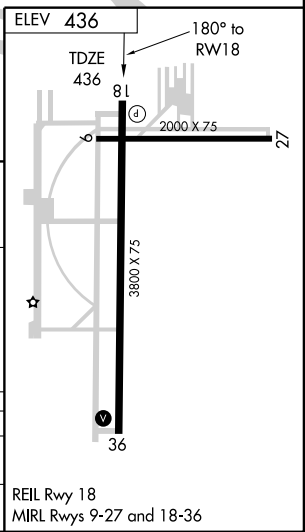
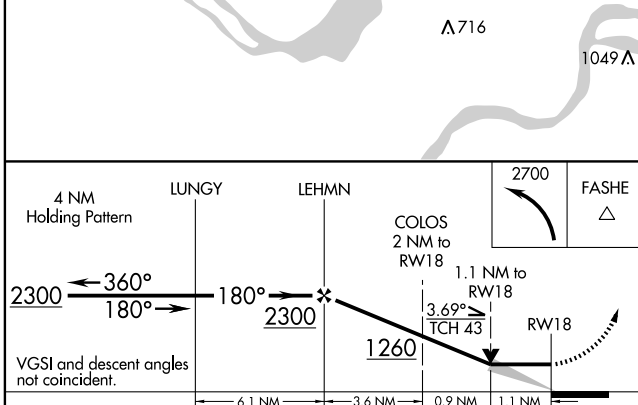
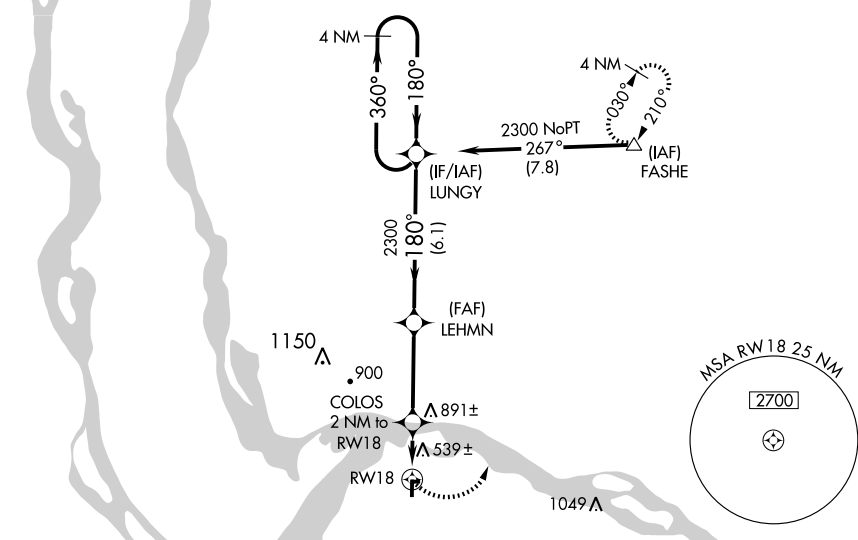
MISSED APPROACH: Climbing left turn to 2700 direct FASHE and hold.

ASOS 118,075	ST. LOUIS APP CON 124.2 353.9	CLNC DEL 121.6	UNICOM 122.7 (CTAF) 0
------------------------	---	--------------------------	--

Procedure NA for arrivals at FASHE via V9 northeast bound.

NC-3, 22 OCT 2009 to 19 NOV 2009

NC-3, 22 OCT 2009 to 19 NOV 2009



CATEGORY	A	B	C	D
LNVA MDA	840-1	404 (500-1)	840-1¼ 404 (500-1¼)	NA
CIRCLING	840-1 404 (500-1)	900-1 464 (500-1)	900-1½ 464 (500-1½)	NA