

WAAS CH 53708 W13A	APP CRS 130°	Rwy ldg 8001 TDZE 18 Apt Elev 19
--	------------------------	---

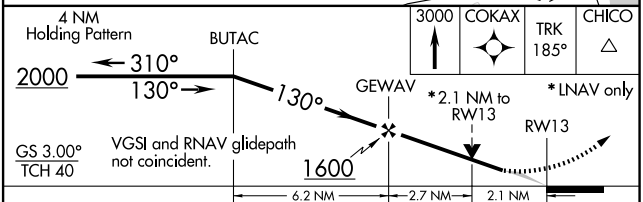
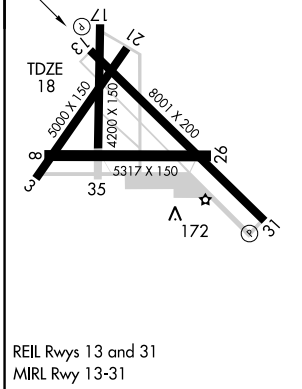
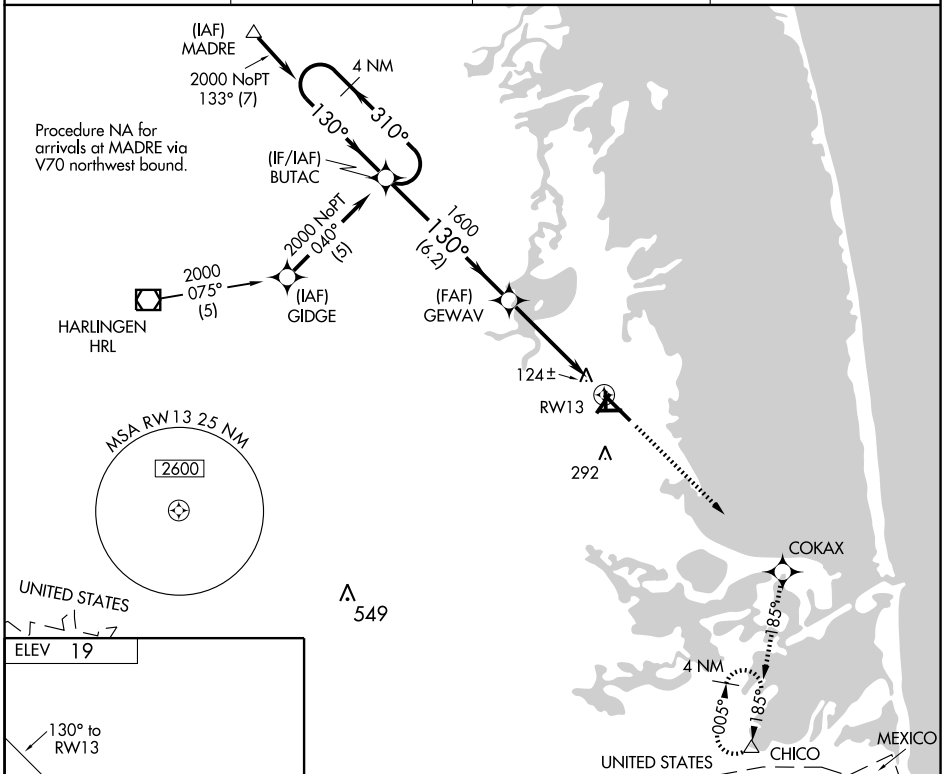
RNAV (GPS) RWY 13

PORT ISABEL-CAMERON COUNTY (PIL)

⚠ Baro-VNAV NA when using Brownsville altimeter setting. For uncompensated Baro-VNAV systems, LNAV-VNAV NA below -15°C (5°F) or above 54°C (130°F).
⚠ DME/DME RNP-0.3 NA. VDP NA when using Brownsville altimeter setting. When local altimeter setting not received, use Brownsville altimeter setting and increase all DA 38 feet and all MDA 40 feet, increase LPV all Cats, LNAV Cat C, and circling Cat C visibility ¼ mile.

MISSED APPROACH: Climb to 3000 direct COKAX and via 185° track to CHICO and hold.

ASOS 118.525	VALLEY APP CON 119.5 257.6	CLNC DEL 119.2	UNICOM 122.8 (CTAF)
------------------------	--------------------------------------	--------------------------	-------------------------------



CATEGORY	A	B	C	D
LPV DA		376-1¼	358 (400-1¼)	NA
LNAV/VNAV DA		424-1½	406 (500-1½)	NA
LNAV MDA	480-1	462 (500-1)	480-1¼ 462 (500-1¼)	NA
CIRCLING	540-1 521 (600-1)	540-1 521 (600-1)	660-1¾ 641 (700-1¾)	NA

SC-3, 22 OCT 2009 to 19 NOV 2009

SC-3, 22 OCT 2009 to 19 NOV 2009