

AURORA, NEBRASKA

AL-6097 (FAA)

VOR-A  
AURORA MUNI-AL POTTER FIELD (AUH)

VORTAC GRI <b>112.0</b> Chan 57	APP CRS <b>103°</b>	Rwy Idg TDZE Apt Elev <b>N/A</b> <b>N/A</b> <b>1804</b>
---------------------------------------	------------------------	--

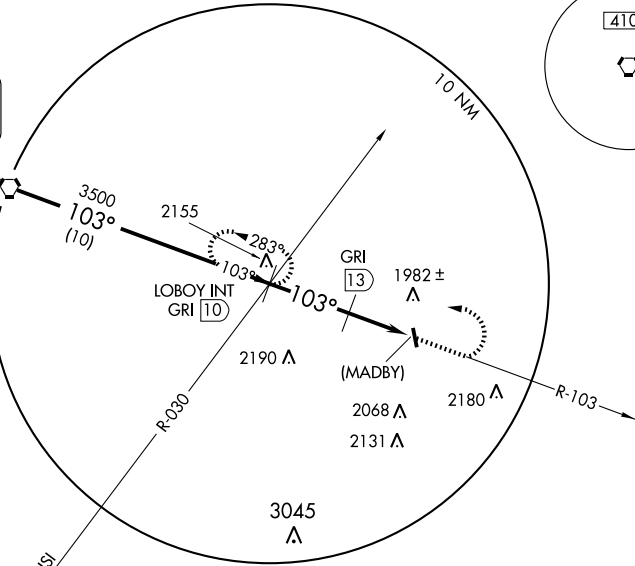
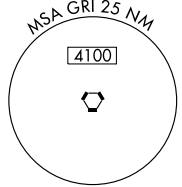
MISSED APPROACH: Climb to 3500 then left turn via GRI R-103 to LOBOY Int/GRI 10 DME and hold.

AWOS-3  
**121.225**

MINNEAPOLIS CENTER  
**119.4 278.8**

UNICOM  
**122.8** (CTAF)

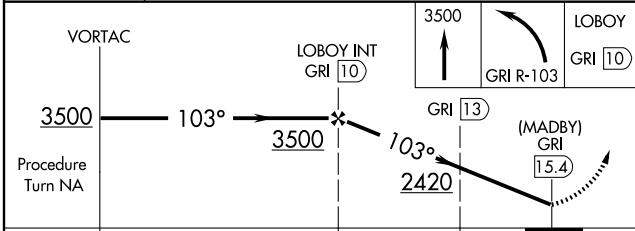
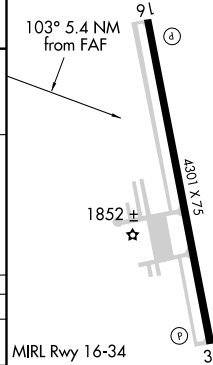
IAF  
GRAND ISLAND  
112.0 GRI  
Chan 57



NC-2, 22 OCT 2009 to 19 NOV 2009

NC-2, 22 OCT 2009 to 19 NOV 2009

ELEV 1804



CATEGORY	A	B	C	D
CIRCLING	2420-1	616 (700-1)	2420-1¾ 616 (700-1¾)	2420-2 616 (700-2)
DME MINIMUMS				
CIRCLING	2300-1 496 (500-1)	2340-1 536 (600-1)	2340-1½ 536 (600-1½)	2360-2 556 (600-2)

MIRL Rwy 16-34	FAF to MAP 5.4 NM					
	Knots	60	90	120	150	180
	Min:Sec	5:24	3:36	2:42	2:10	1:48

AURORA, NEBRASKA  
Amdt 6A 08269

AURORA MUNI-AL POTTER FIELD (AUH)  
VOR-A

40°54'N-98°00'W