

RNAV (GPS) RWY 16

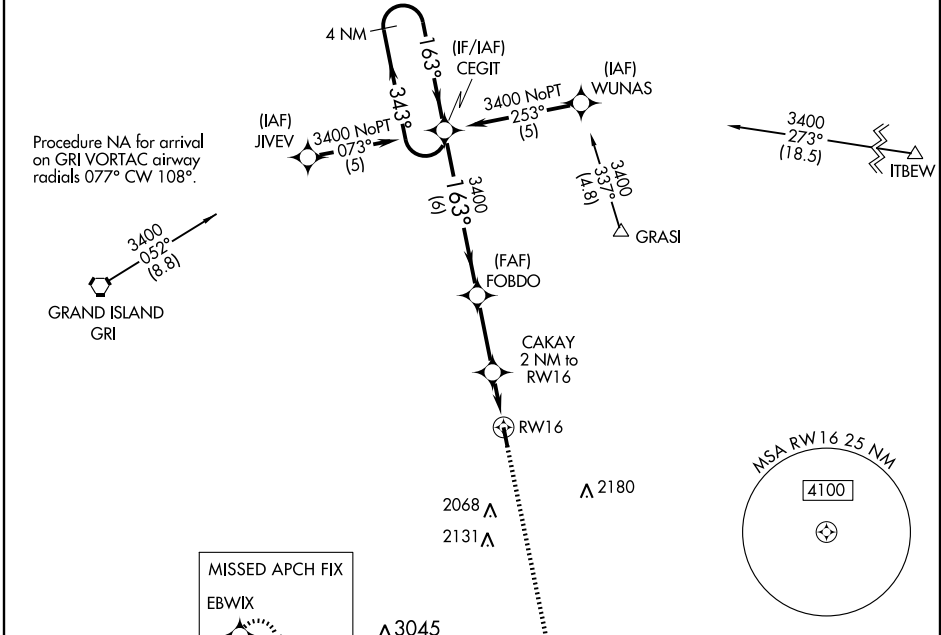
AURORA MUNI-AL POTTER FIELD (AUH)

WAAS CH 77809 W16A	APP CRS 163°	Rwy Idg 4301 TDZE 1803 Apt Elev 1803
--	------------------------	---

▼ Baro-VNAV NA when using Grand Island altimeter setting. For uncompensated Baro-VNAV systems, LNAV/VNAV NA below -18°C (0°F) or above 54°C (130°F). DME/DME RNP-0.3 NA. Visibility reduction by helicopters NA. When local altimeter setting not received, use Grand Island altimeter setting and increase all DA 41 feet and all MDA 60 feet and LPV all Cals visibility ¼ mile. VDP NA when using Grand Island altimeter setting.

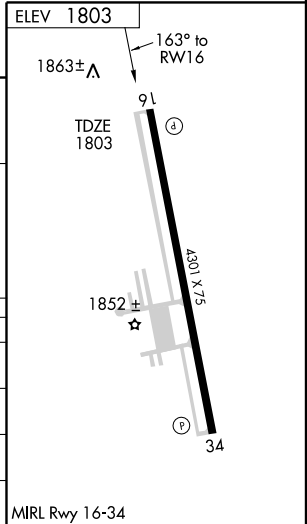
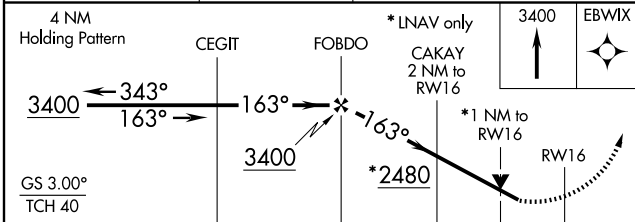
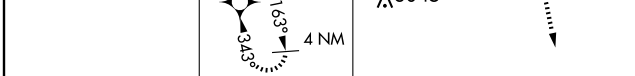
▲ MISSED APPROACH: Climb to 3400 direct EBWIX and hold.

AWOS-3 121.225	MINNEAPOLIS CENTER 119.4 278.8	UNICOM 122.8 (CTAF)
--------------------------	--	-------------------------------



NC-2, 22 OCT 2009 to 19 NOV 2009

NC-2, 22 OCT 2009 to 19 NOV 2009



CATEGORY	A	B	C	D
LPV DA	2102-1	299 (300-1)		NA
LNAV/VNAV DA	2133-1¼	330 (400-1¼)		NA
LNAV MDA	2160-1	357 (400-1)		NA
CIRCLING	2300-1 497 (500-1)	2340-1 537 (600-1)		NA