

RNAV (GPS) RWY 9

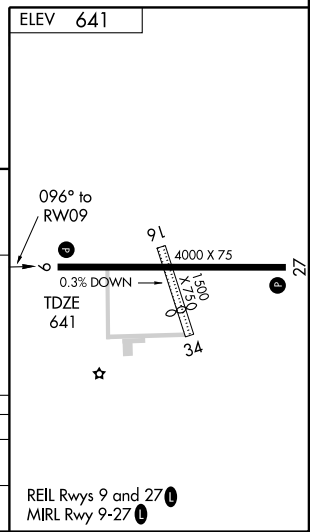
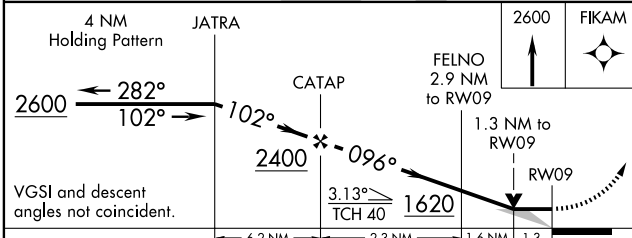
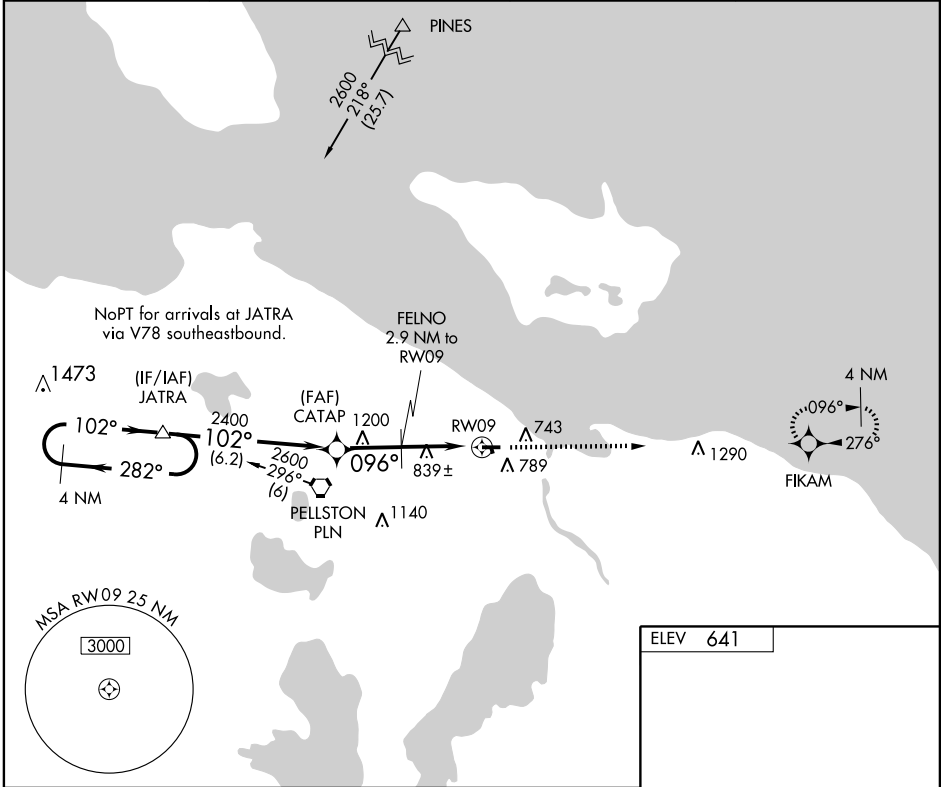
CHEBOYGAN COUNTY (SLH)

APP CRS	Rwy Idg	4000
096°	TDZE	641
	Apt Elev	641

⚠ If local altimeter setting not received, use Pellston altimeter setting and increase all MDAs 60 feet.
⚠ NA DME/DME RNP -0.3 NA.
 VDP NA with Pellston altimeter setting.

MISSED APPROACH: Climb to 2600 direct FIKAM and hold.

AWOS-3 118.175	MINNEAPOLIS CENTER 134.6 354.05	UNICOM 122.8 (CTAF)	122.5 0
--------------------------	---	-------------------------------	-----------------------



CATEGORY	A	B	C	D
LNAV MDA	1100-1	459 (500-1)	1100-1¼ 459 (500-1¼)	NA
CIRCLING	1140-1	499 (500-1)	1140-1½ 499 (500-1½)	NA

EC-1, 22 OCT 2009 to 19 NOV 2009

EC-1, 22 OCT 2009 to 19 NOV 2009