

# NDB RWY 18

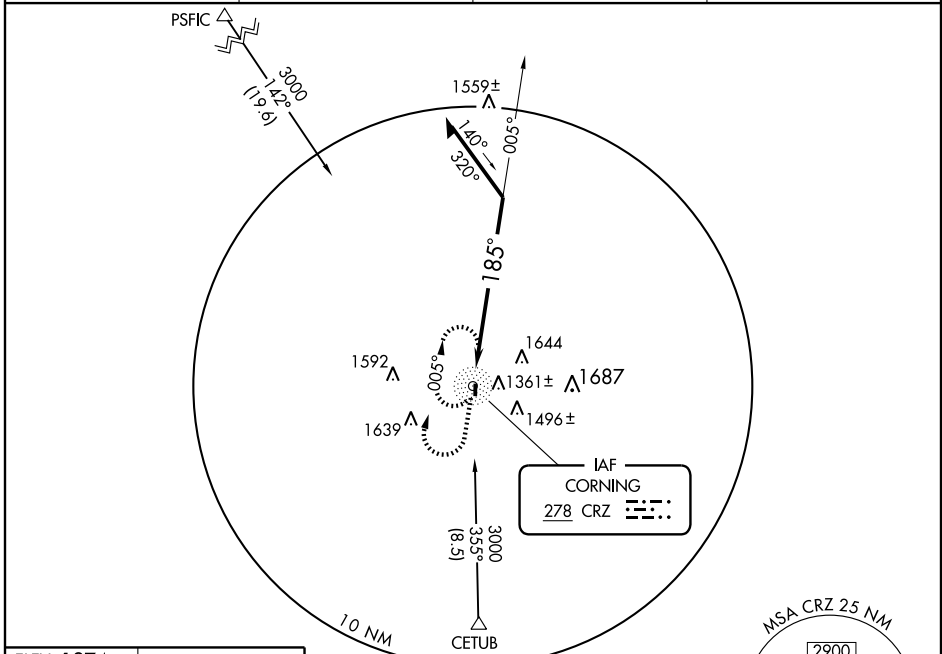
CORNING MUNI (CRZ)

NDB CRZ <b>278</b>	APP CRS <b>185°</b>	Rwy Idg <b>2684</b>
		TDZE <b>1274</b>
		Apt Elev <b>1274</b>

**▼** Use Creston altimeter setting; when not received, use Clarinda altimeter setting and increase all MDAs 60 feet and visibility Cat. B ¼ mile.

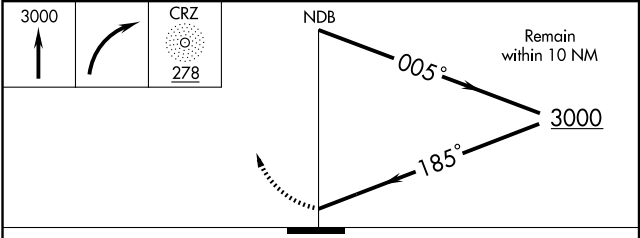
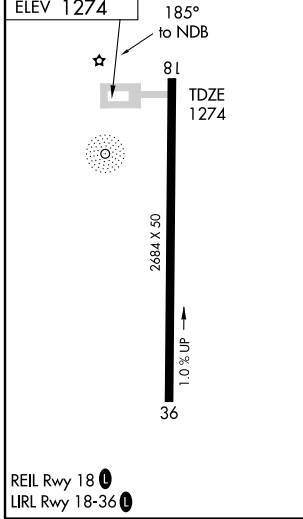
**▲ NA** MISSED APPROACH: Climb to 3000 then right turn direct CRZ NDB and hold.

CRESTON AWOS-3 <b>124.75</b>	MINNEAPOLIS CENTER <b>119.6 290.4</b>	CTAF <b>122.9</b>	<b>122.8 0</b>
---------------------------------	--	----------------------	----------------



NC-3, 22 OCT 2009 to 19 NOV 2009

NC-3, 22 OCT 2009 to 19 NOV 2009



CATEGORY	A	B	C	D
S-18	1960-1	686 (700-1)	NA	
CIRCLING	1960-1	686 (700-1)	NA	