

VACAVILLE, CALIFORNIA

AL-6094 (FAA)

VORTAC SAC 115.2 Chan 99	APP CRS 241°	Rwy Idg TDZE Apt Elev	N/A N/A 117
--	------------------------	-----------------------------	--

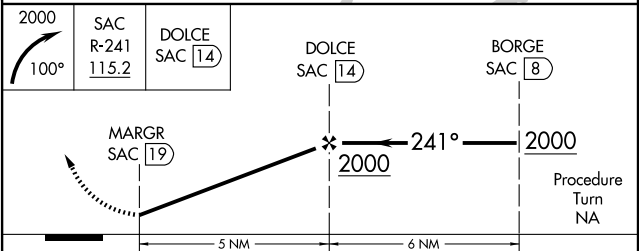
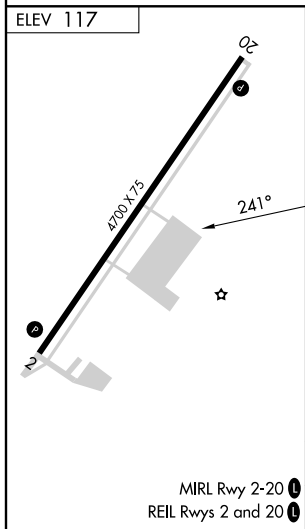
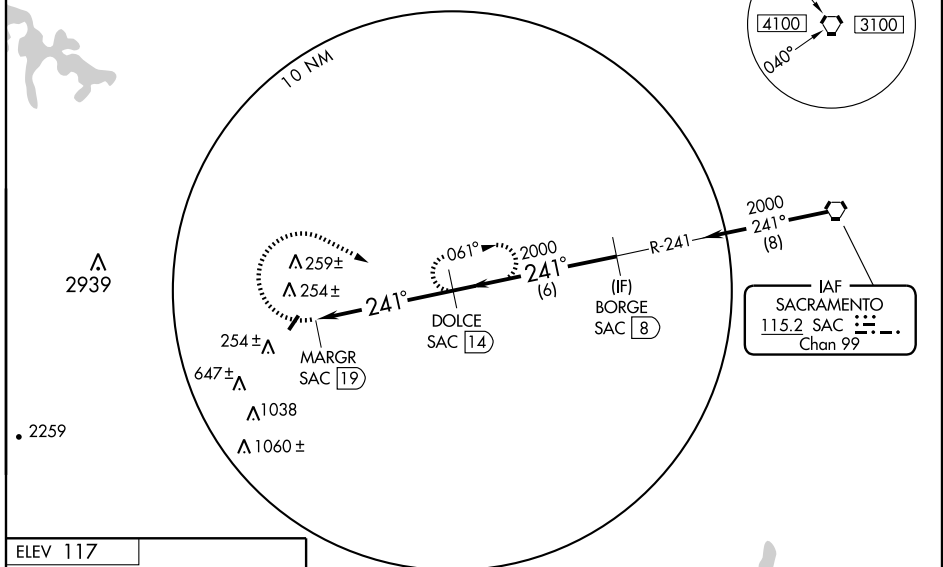
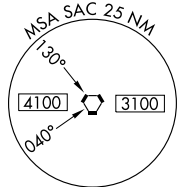
VOR/DME-A
VACAVILLE/NUT TREE (VCB)

▼ Circling NA west of Rwy 2-20.
▲ When local altimeter setting not received, use Travis AFB altimeter setting and increase all MDA 40 feet and Cat C visibility ¼ mile.

MISSED APPROACH: Climbing right turn to 2000 via heading 100° and SAC R-241 to DOLCE/14 DME and hold.

ASOS 134.75	TRAVIS APP CON 128.4 291.0	UNICOM 122.7 (CTAF) 0
-----------------------	--------------------------------------	---------------------------------

Procedure NA for arrivals on SAC VORTAC airway radials 137 CW 237.



CATEGORY	A	B	C	D
CIRCLING	760-1	643 (700-1)	760-1¾ 643 (700-1¾)	NA

VACAVILLE, CALIFORNIA
Amdt 5 09127

38°23'N - 121°58'W

VACAVILLE/NUT TREE (VCB)
VOR/DME-A

SW-2, 22 OCT 2009 to 19 NOV 2009

SW-2, 22 OCT 2009 to 19 NOV 2009