

VACAVILLE, CALIFORNIA

AL-6094 (FAA)

# RNAV (GPS) Y RWY 20

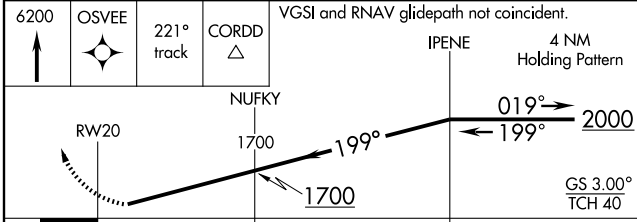
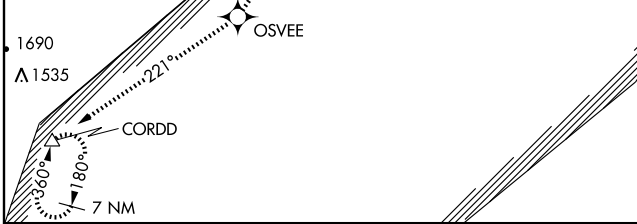
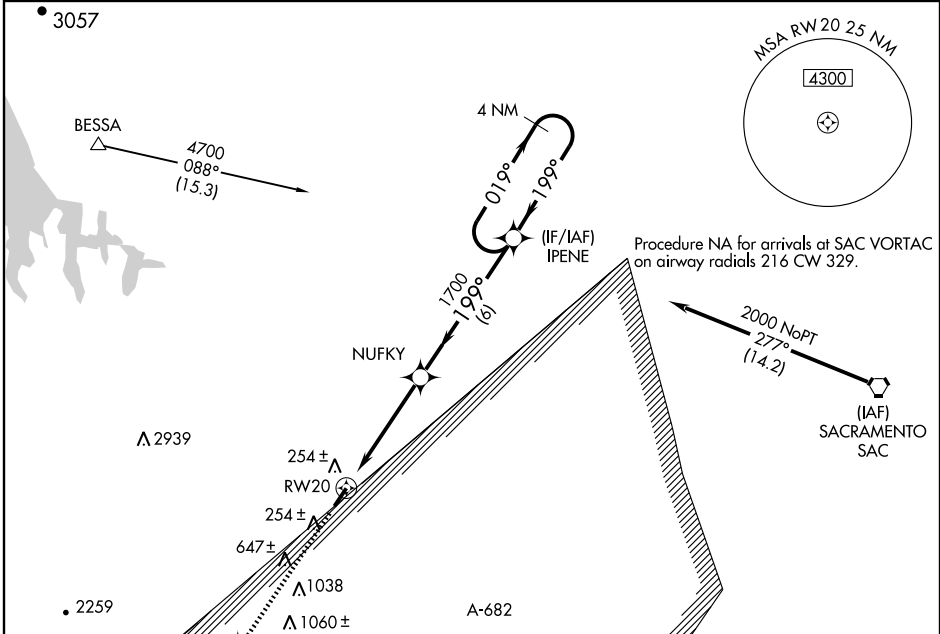
VACAVILLE/NUT TREE (VCB)

WAAS CH <b>53502</b> W20A	APP CRS <b>199°</b>	Rwy Idg TDZE Apt Elev	<b>4700</b> <b>117</b> <b>117</b>
---------------------------------	------------------------	-----------------------------	---

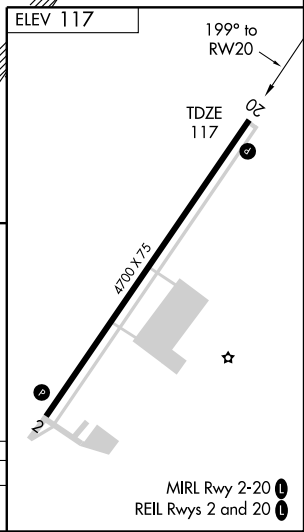
**⚠** DME/DME RNP-0.3 NA.  
**⚠** If local altimeter setting not received, use Davis University altimeter setting and increase DA to 650 feet.  
**⚠** Visibility reduction by helicopters NA.

MISSED APPROACH: Climb to 6200 direct OSVEE and via 221° track to CORDD and hold, continue climb-in-hold to 6200.

ASOS <b>134.75</b>	TRAVIS APP CON <b>128.4 291.0</b>	UNICOM <b>122.7 (CTAF) 0</b>
-----------------------	--------------------------------------	---------------------------------



6200	OSVEE	221° track	CORDD	VGSi and RNAV glidepath not coincident.			
				IPENE	4 NM Holding Pattern		
				NUFKY		2000	
				RW20	1700	1700	GS 3.00° TCH 40
					4.8 NM	6 NM	



VACAVILLE, CALIFORNIA  
Orig 09127

38°23'N - 121°58'W

# RNAV (GPS) Y RWY 20

VACAVILLE/NUT TREE (VCB)

MIRL Rwy 2-20 **1**  
REIL Rws 2 and 20 **1**

SW-2, 22 OCT 2009 to 19 NOV 2009

SW-2, 22 OCT 2009 to 19 NOV 2009