

FOREST CITY, IOWA

AL-6092 (FAA)

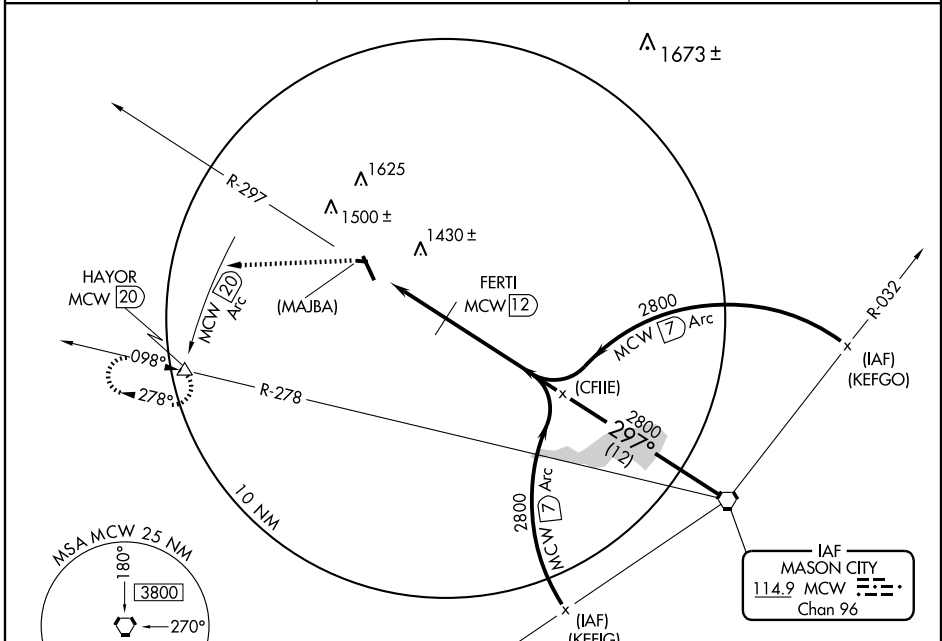
VORTAC MCW <b>114.9</b> Chan <b>96</b>	APP CRS <b>297°</b>	Rwy Idg TDZE Apt Elev <b>1230</b>	N/A N/A N/A
--	------------------------	---	-------------------

# VOR/DME or GPS-A

FOREST CITY MUNI (FXY)

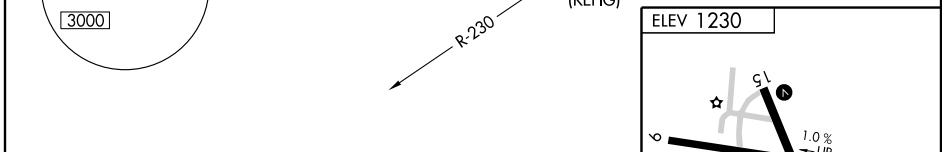
<p>▼ Use Mason City altimeter setting.</p> <p>▲ NA Circling to Rwy 27 not authorized at night.</p>	<p>MISSED APPROACH: Climb to 3000 via heading 260° to MCW 20 DME Arc then via MCW 20 DME Arc counterclockwise to HAYOR DME and hold.</p>
--	--

AWOS-3 <b>123.925</b>	MINNEAPOLIS CENTER <b>127.3 380.2</b>	UNICOM <b>122.8 (CTAF) 0</b>
--------------------------	--	---------------------------------



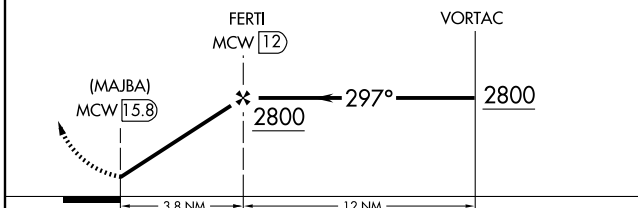
NC-3, 22 OCT 2009 to 19 NOV 2009

NC-3, 22 OCT 2009 to 19 NOV 2009



3000 ↑ 260°	MCW 20 ARC	Counter-clockwise	HAYOR △
-------------------	------------------	-------------------	------------

Procedure Turn  
NA



CATEGORY	A	B	C	D	REIL Rwys 15 and 33 0	MIRL Rwys 9-27 and 15-33 0
CIRCLING	1780-1	550 (600-1)	1780-1½ 550 (600-1½)	2130-3 890 (900-3)		

FOREST CITY, IOWA  
Amdt 2C 09015

43°14'N-93°37'W

# VOR/DME or GPS-A

FOREST CITY MUNI (FXY)