

FOREST CITY, IOWA

AL-6092 (FAA)

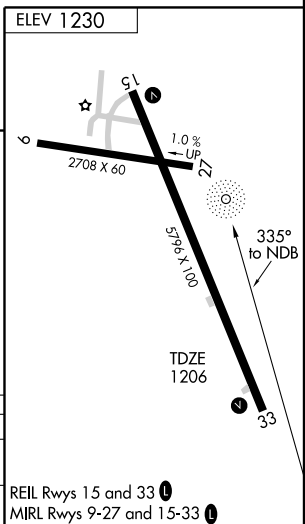
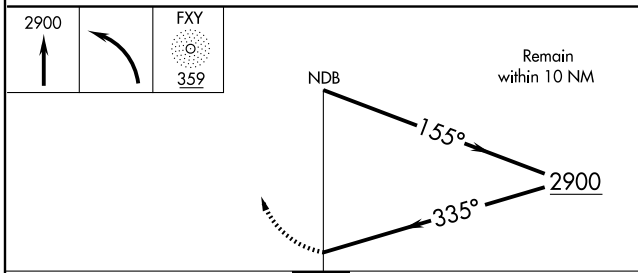
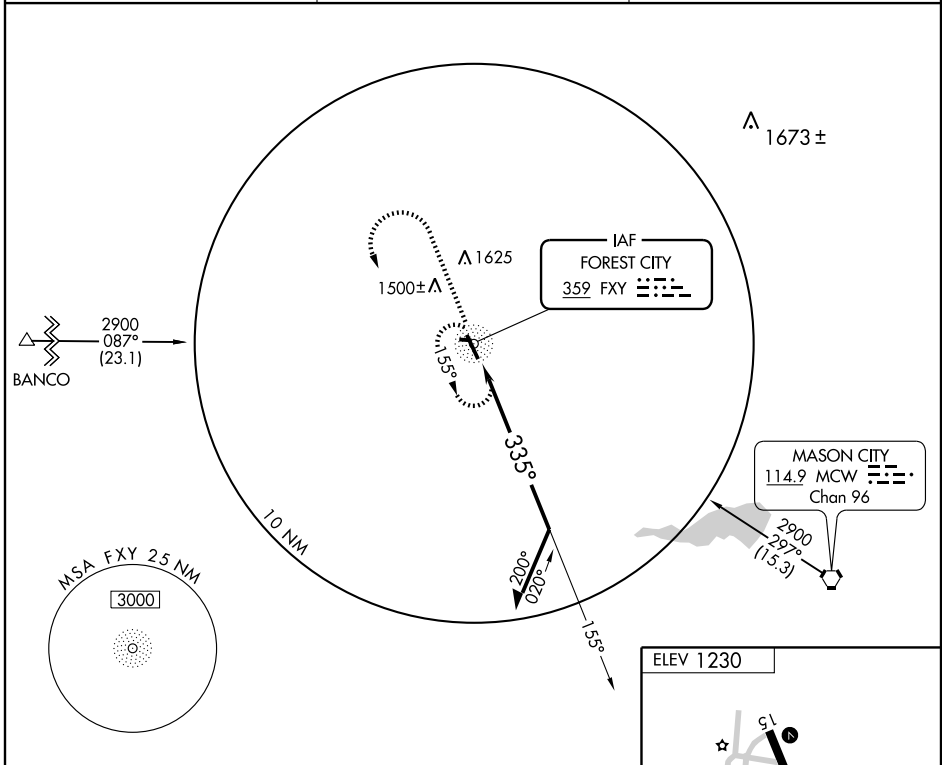
NDB RWY 33

FOREST CITY MUNI (FXY)

NDB FXY 359	APP CRS 335°	Rwy Idg 5796
		TDZE 1206
		Apt Elev 1230

▽ Use Mason City altimeter setting.
△ NA Circling to Rwy 27 not authorized at night.
MISSED APPROACH: Climb to 2900, then left turn direct FXY NDB and hold.

AWOS-3 123.925	MINNEAPOLIS CENTER 127.3 380.2	UNICOM 122.8 (CTAF) 0
--------------------------	--	---------------------------------



CATEGORY	A	B	C	D
S-33	1900-1 694 (700-1)	1900-2 694 (700-2)	1900-2 694 (700-2)	1900-2 1/4 694 (700-2 1/4)
CIRCLING	1900-1 670 (700-1)	1900-2 670 (700-2)	2120-3 890 (900-3)	

REIL Rwy 15 and 33 0
 MRL Rwy 9-27 and 15-33 0

NC-3, 22 OCT 2009 to 19 NOV 2009

NC-3, 22 OCT 2009 to 19 NOV 2009

FOREST CITY, IOWA
 Amdt 1 09015

43°14'N-93°37'W

FOREST CITY MUNI (FXY) NDB RWY 33