

FOREST CITY, IOWA

AL-6092 (FAA)

GPS RWY 33

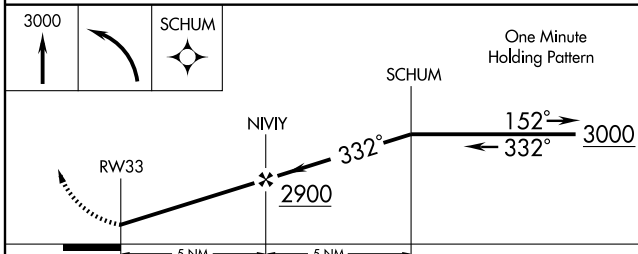
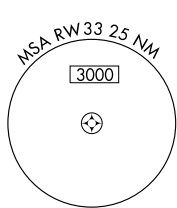
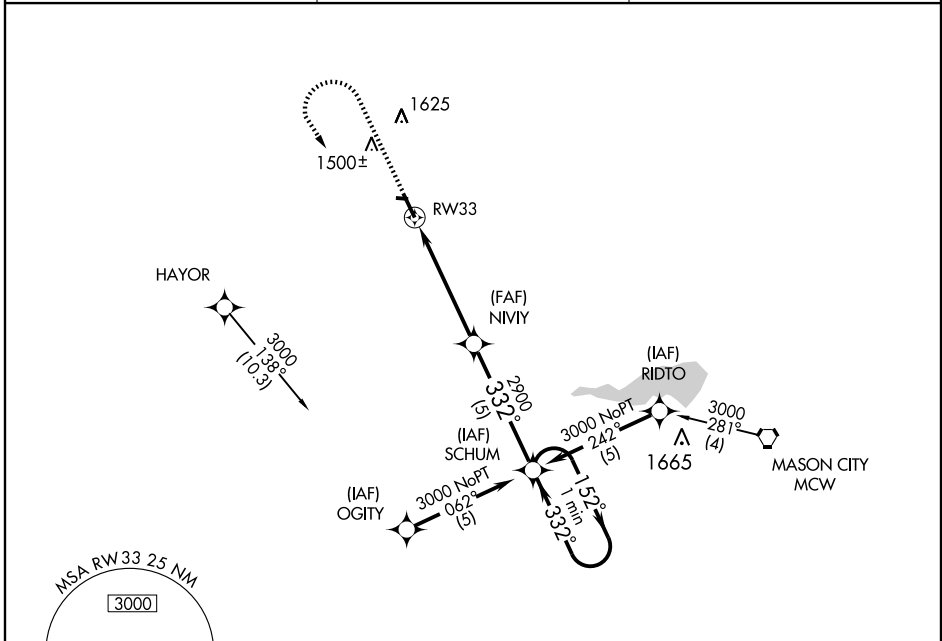
FOREST CITY MUNI (FXY)

| | |
|------------------------|-------------------------|
| APP CRS 332° | Rwy Idg 5796 |
| | TDZE 1206 |
| | Apt Elev 1230 |

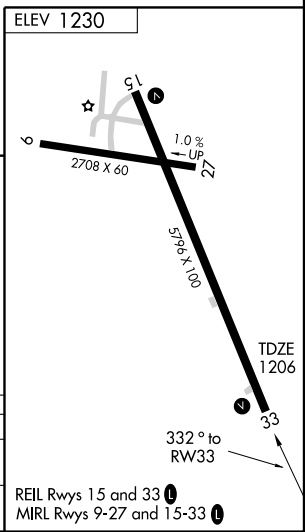
▼ Use Mason City altimeter setting.
▲ NA Circling to Rwy 27 not authorized at night.

MISSED APPROACH: Climb to 3000, then left turn direct SCHUM WP and hold.

| | | |
|--------------------------|--|---------------------------------|
| AWOS-3 123.925 | MINNEAPOLIS CENTER 127.3 380.2 | UNICOM 122.8 (CTAF) 0 |
|--------------------------|--|---------------------------------|



| CATEGORY | A | B | C | D |
|----------|--------|-------------|-------------------------|-----------------------|
| S-33 | 1740-1 | 534 (600-1) | 1740-1½ 534 (600-1¼) | 1740-2 534 (600-2) |
| CIRCLING | 1740-1 | 510 (600-1) | 1740-1½ 510 (600-1½) | 2120-3 890 (900-3) |



NC-3, 22 OCT 2009 to 19 NOV 2009

NC-3, 22 OCT 2009 to 19 NOV 2009

FOREST CITY, IOWA
Orig 09015

43°14'N-93°37'W

FOREST CITY MUNI (FXY) GPS RWY 33