

NDB or GPS RWY 24

CONRAD (S01)

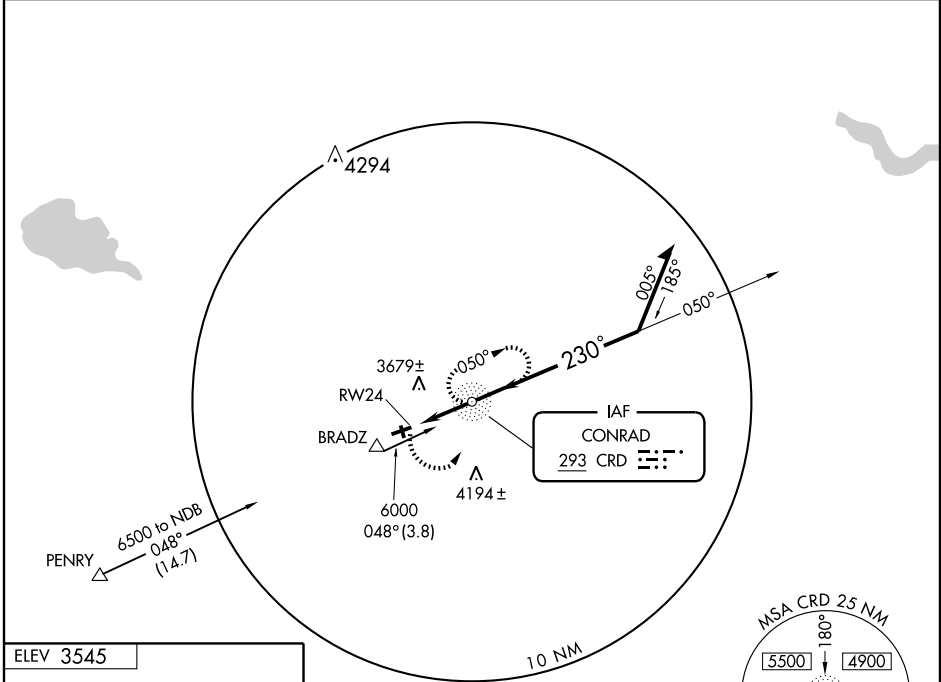
NDB CRD 293	APP CRS 230°	Rwy Idg TDZE Apt Elev	4601 3535 3545
-----------------------	------------------------	-----------------------------	---

▼ Use Cut Bank altimeter setting; if not received, procedure not authorized.

▲ NA MISSED APPROACH: Climbing left turn to 5200 direct CRD NDB and hold.

SALT LAKE CITY CENTER **133.4 285.4**

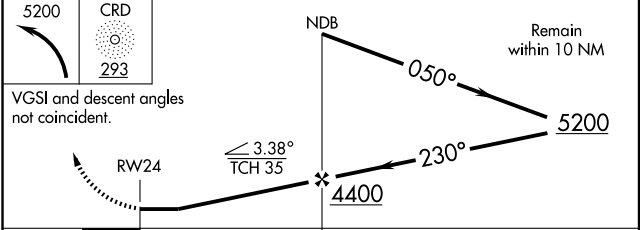
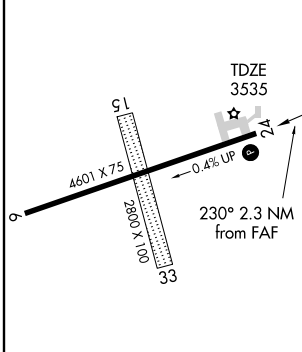
UNICOM **122.8** (CTAF) **📻**



NW-1, 22 OCT 2009 to 19 NOV 2009

NW-1, 22 OCT 2009 to 19 NOV 2009

ELEV 3545



MIRL Rwy 6-24 **📻**

REIL Rwy 24 **📻**

FAF to MAP 2.3 NM

Knots	60	90	120	150	180
Min:Sec	2:18	1:32	1:09	0:55	0:46

CATEGORY	A	B	C	D
S-24	4260-1	725 (800-1)	4260-2 725 (800-2)	4260-2½ 725 (800-2½)
CIRCLING	4260-1	715 (800-1)	4340-2½ 795 (800-2½)	NA