

DICKSON, TENNESSEE

AL-6085 (FAA)

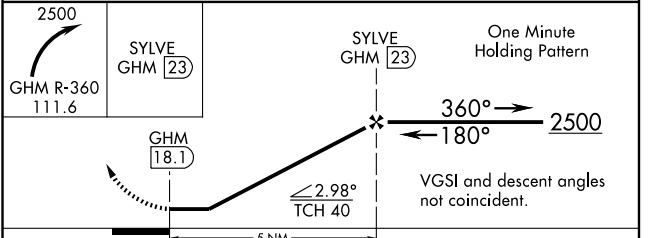
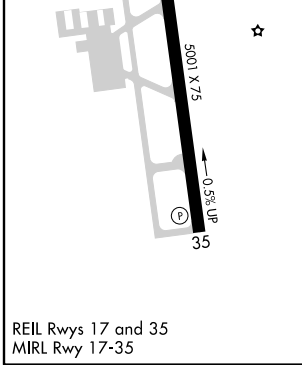
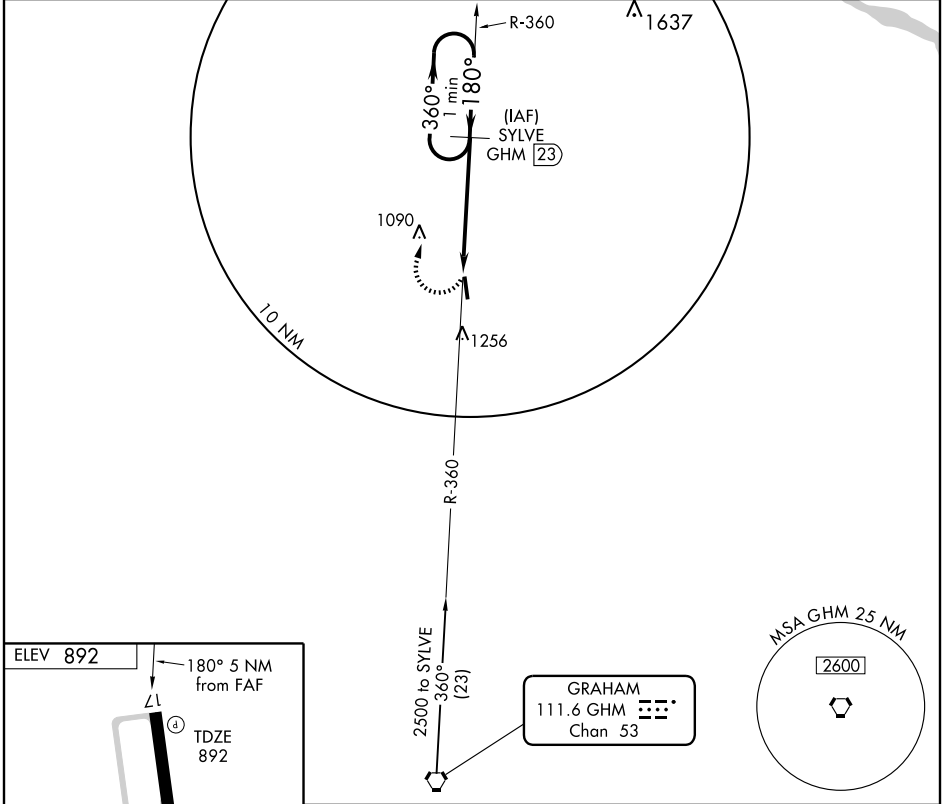
VORTAC GHM <b>111.6</b> Chan <b>53</b>	APP CRS <b>180°</b>	Rwy Idg TDZE Apt Elev	<b>5001</b> <b>892</b> <b>892</b>
--	------------------------	-----------------------------	---

# VOR/DME RWY 17

DICKSON MUNI (M02)

<p>▼ ▲ NA</p>	<p>MISSED APPROACH: Climbing right turn to 2500 via R-360 GHM VORTAC to SYLVE 23 DME and hold.</p>
-------------------	--

<p>AWOS-3 <b>123.875</b></p>	<p>MEMPHIS CENTER <b>125.85 381.4</b></p>	<p>UNICOM <b>122.8 (CTAF)</b></p>
----------------------------------	---	---------------------------------------



CATEGORY	A	B	C	D
S-17	1400-1	508 (600-1)	1400-1½	508 (600-1½)
CIRCLING	1400-1	508 (600-1)	1560-1¾ 668 (700-1¾)	1560-2 668 (700-2)

DICKSON, TENNESSEE  
Amdt 4C 09127

36° 08'N-87° 26'W

# VOR/DME RWY 17

SE-1, 22 OCT 2009 to 19 NOV 2009

SE-1, 22 OCT 2009 to 19 NOV 2009