

NDB RWY 31

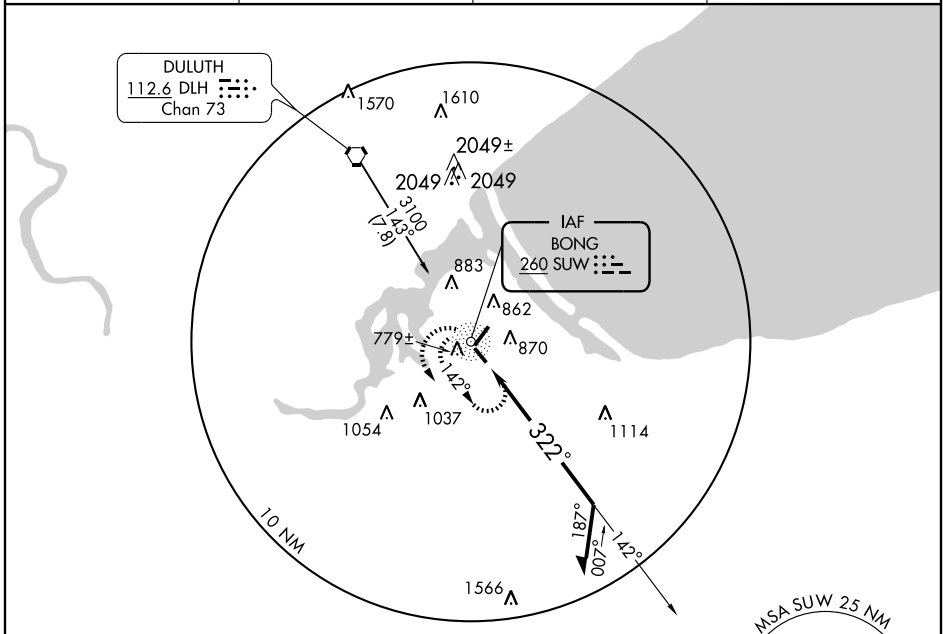
SUPERIOR/RICHARD I. BONG (SUW)

NDB SUW	APP CRS	Rwy Idg	4000
260	322°	TDZE	674
		Apt Elev	674

▽ NA
▲ NA

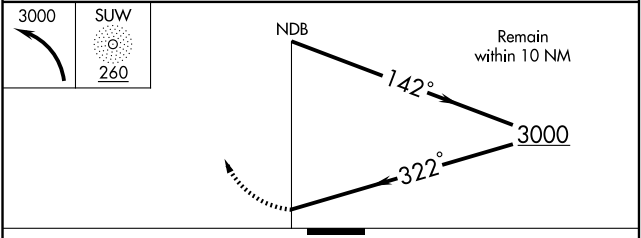
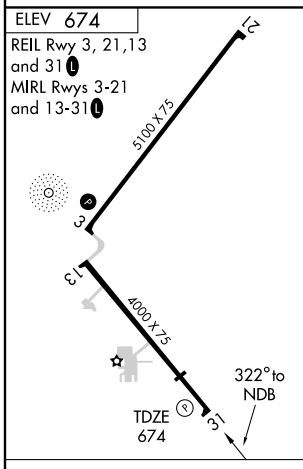
MISSED APPROACH: Climbing left turn to 3000 in SUW NDB holding pattern.

AWOS-3 118.875	DULUTH APP CON * 125.45 255.9	CLNC DEL 124.8	UNICOM 122.7 (CTAF) 0
--------------------------	---	--------------------------	---------------------------------



EC-3, 22 OCT 2009 to 19 NOV 2009

EC-3, 22 OCT 2009 to 19 NOV 2009



ELEV	674				
REIL Rwy 3, 21, 13 and 31	0				
MIRL Rwy 3-21 and 13-31	0				
Knots	60	90	120	150	180
Min:Sec					

CATEGORY	A	B	C	D
S-31	1660-1¼ 986 (1000-1¼)	1660-1½ 986 (1000-1½)	1660-3	986 (1000-3)
CIRCLING	1660-1¼ 986 (1000-1¼)	1660-1½ 986 (1000-1½)	1660-3	986 (1000-3)