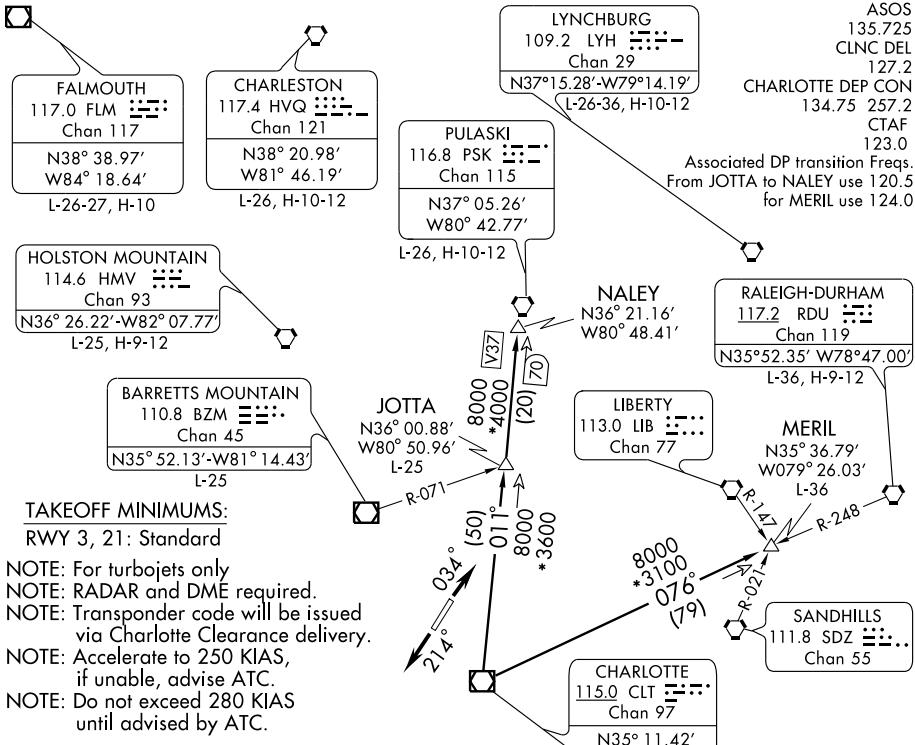


HORNET FOUR DEPARTURE

GASTONIA MUNI (AKH)
GASTONIA, NORTH CAROLINA



ASOS 135.725
CLNC DEL 127.2
CHARLOTTE DEP CON 134.75 257.2
CTAF 123.0
Associated DP transition Freqs.
From JOTTA to NALEY use 120.5
for MERIL use 124.0

TAKEOFF MINIMUMS:
RWY 3, 21: Standard

NOTE: For turbojets only
NOTE: RADAR and DME required.
NOTE: Transponder code will be issued via Charlotte Clearance delivery.
NOTE: Accelerate to 250 KIAS, if unable, advise ATC.
NOTE: Do not exceed 280 KIAS until advised by ATC.

TAKEOFF OBSTACLE NOTES:
RWY3: Multiple trees beginning 1200 feet from DER, 433 feet left of centerline, up to 80 feet AGL/859 feet MSL. Multiple trees beginning 162 feet from DER, 371 feet right of centerline, up to 136 feet AGL/885 feet MSL.
RWY21: Antenna and multiple trees beginning 269 feet from DER, 210 feet left of centerline, up to 101 feet AGL/880 feet MSL. Multiple trees beginning 252 feet from DER, 264 feet right of centerline, up to 136 feet AGL/885 feet MSL. NOTE: Chart not to scale.

DEPARTURE ROUTE DESCRIPTION

TAKEOFF RWY 3: Climb heading 034°. Thence....
TAKEOFF RWY 21: Climb heading 214°. Thence....
...Expect radar vectors to intercept filed/assigned transition or enroute fix/navaid. Maintain 3400. Expect filed altitude/flight level 10 minutes after departure.
JOTTA TRANSITION (HOR4.JOTTA): From over CLT VOR/DME via CLT R-011 to JOTTA INT. Thence as filed.
MERIL TRANSITION (HOR4.MERIL): From over CLT VOR/DME via CLT R-076 to MERIL INT. Thence as filed.
NALEY TRANSITION (HOR4.NALEY): From over CLT VOR/DME via CLT R-011 to NALEY INT. Thence as filed.

HORNET FOUR DEPARTURE

SE-2, 22 OCT 2009 to 19 NOV 2009

SE-2, 22 OCT 2009 to 19 NOV 2009