

# RNAV (GPS) RWY 35

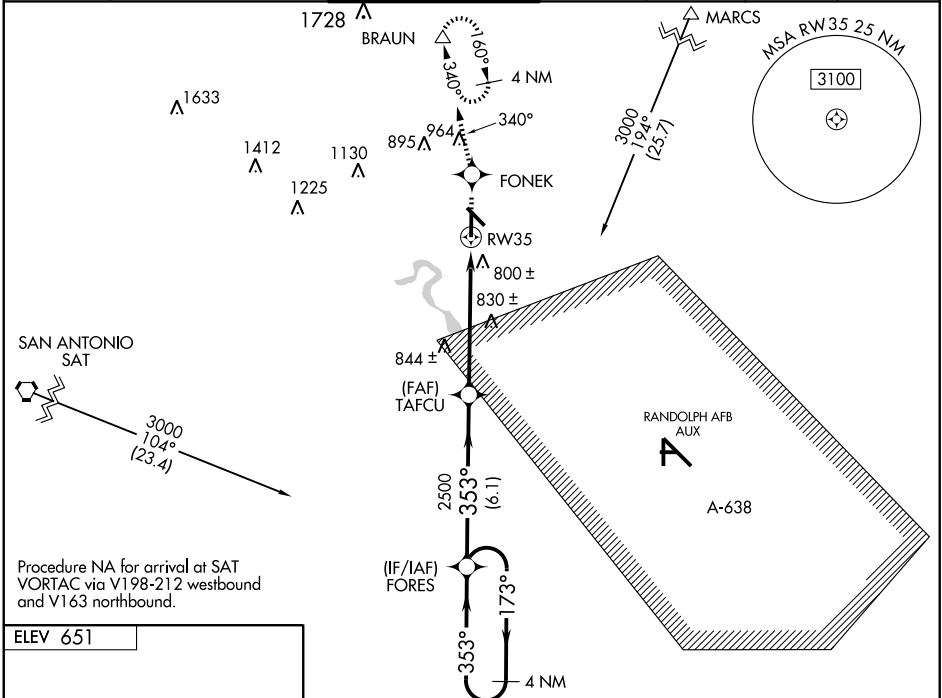
NEW BRAUNFELS MUNI (B.A.Z)

WAAS CH <b>93900</b> <b>W35A</b>	APP CRS <b>353°</b>	Rwy Idg TDZE Apt Elev	<b>5364</b> <b>650</b> <b>651</b>
--	------------------------	-----------------------------	---

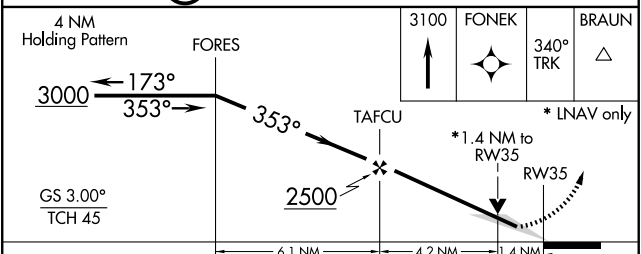
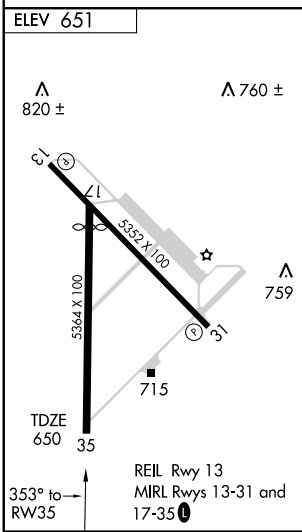
When local altimeter setting not received, use San Marcos Muni altimeter setting and increase all DAs 42 feet LPV visibility ¼ all Cats, increase all MDAs 60 feet LNAV and circling visibility Cat C and D ¼. VDP and Baro-VNAV NA when using San Marcos Muni altimeter setting. For uncompensated Baro-VNAV systems, LNAV/VNAV NA below -16°C (4°F) or above 47°C (116°F). DME/DME RNP-0.3 NA.

MISSED APPROACH: Climb to 3100 direct FONEK and via 340° track to BRAUN and hold, continue climb-in-hold to 3100.

ATIS <b>119.325</b>	SAN ANTONIO APP CON <b>124.45 335.625</b>	NEW BRAUNFELS TOWER * <b>127.05 285.4</b>	GND CON <b>120.175</b>	CLNC DEL <b>134.75</b>	UNICOM <b>122.7</b>	CTAF <b>127.05</b>
------------------------	--	--	---------------------------	---------------------------	------------------------	-----------------------



Procedure NA for arrival at SAT VORTAC via V198-212 westbound and V163 northbound.



CATEGORY	A	B	C	D
LPV DA	929-1 279 (300-1)			
LNAV/VNAV DA	1110-1¾ 460 (500-1¾)			
LNAV MDA	1140-1	490 (500-1)	1140-1¼ 490 (500-1¼)	1140-1½ 490 (500-1½)
CIRCLING	1140-1	489 (500-1)	1280-1¾ 629 (700-1¾)	1280-2 629 (700-2)

SC-3, 22 OCT 2009 to 19 NOV 2009

SC-3, 22 OCT 2009 to 19 NOV 2009