

RNAV (GPS) RWY 31

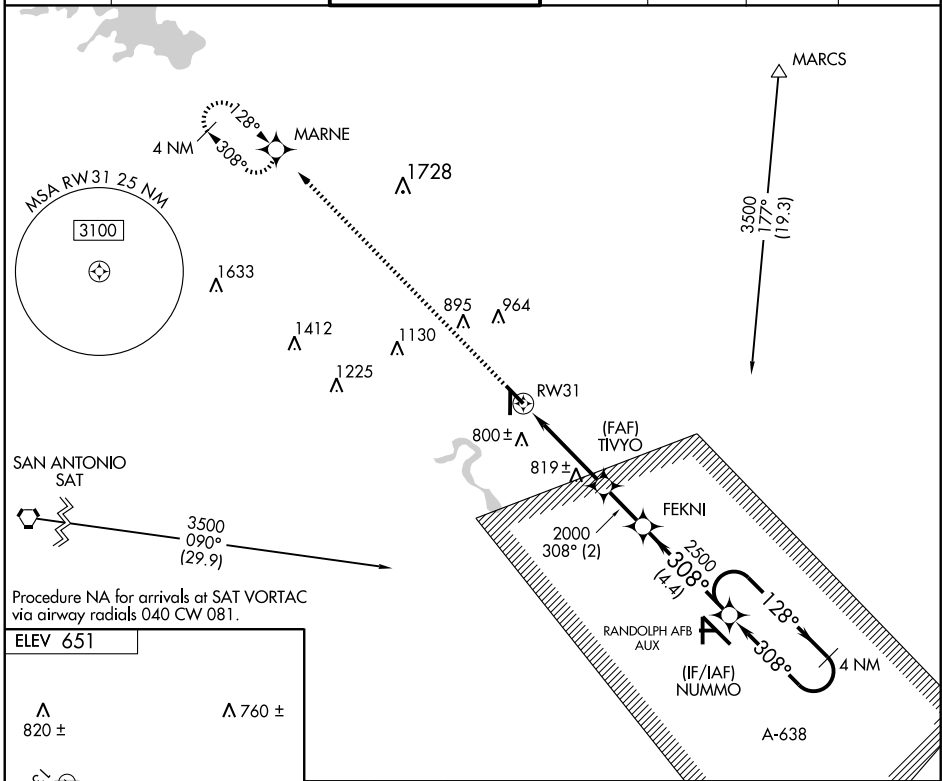
NEW BRAUNFELS MUNI (B.A.Z)

APP CRS	Rwy Idg	5352
308°	TDZE	646
	Apt Elev	651

- ▼ When local altimeter setting not received, use San Marcos Muni altimeter setting and increase all MDAs 60 feet, increase LNAV and circling visibility Cats C and D ½ mile.
- ▲ VDP NA when using San Marcos Muni altimeter setting. DME/DME RNP-0.3 NA.

MISSED APPROACH: Climb to 3100 direct MARNE and hold.

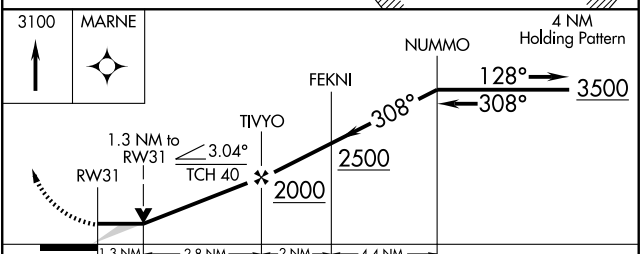
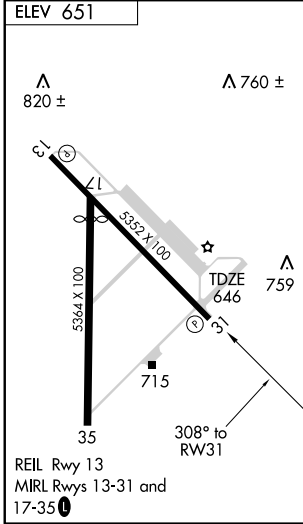
ATIS	SAN ANTONIO APP CON	NEW BRAUNFELS TOWER *	GND CON	CLNC DEL	UNICOM	CTAF
119.325	124.45 335.625	127.05 285.4	120.175	134.75	122.7	127.05



SC-3, 22 OCT 2009 to 19 NOV 2009

SC-3, 22 OCT 2009 to 19 NOV 2009

Procedure NA for arrivals at SAT VORTAC via airway radials 040 CW 081.



CATEGORY	A	B	C	D
LNAV MDA	1100-1	454 (500-1)	1100-1¼ 454 (500-1¼)	1100-1½ 454 (500-1½)
CIRCLING	1100-1 449 (500-1)	1120-1 469 (500-1)	1280-1¾ 629 (700-1¾)	1280-2 629 (700-2)