

RNAV (GPS) RWY 17

NEW BRAUNFELS MUNI (B.A.Z)

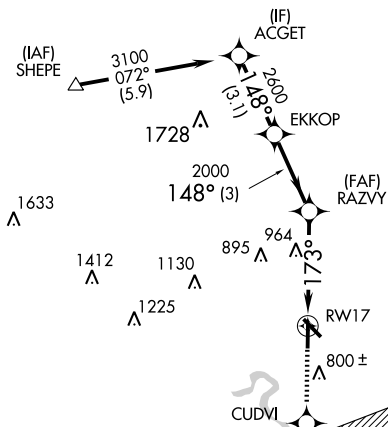
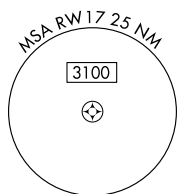
APP CRS	Rwy Idg	4842
173°	TDZE	651
	Apt Elev	651

- ▼ When local altimeter setting not received, use San Marcos Muni altimeter setting and increase all MDAs 60 feet, increase LNAV and circling visibility Cats C and D 1/4 mile.
- ▲ VDP NA when using San Marcos Muni altimeter setting. DME/DME RNP-0.3 NA.

MISSED APPROACH: Climb to 3500 direct CUDVI and via 112° track to NUMMO and hold, continue climb-in-hold to 3500.

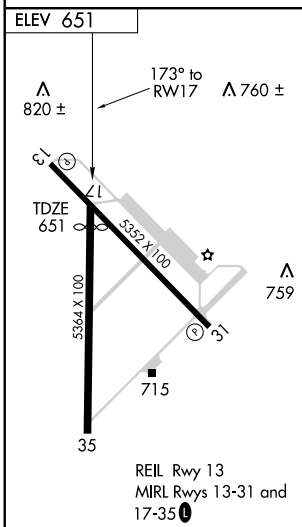
ATIS	SAN ANTONIO APP CON	NEW BRAUNFELS TOWER *	GND CON	CLNC DEL	UNICOM	CTAF
119.325	124.45 335.625	127.05 285.4	120.175	134.75	122.7	127.05 ①

Procedure NA for arrivals at SHEPE via V17 southwest bound.



SC-3, 22 OCT 2009 to 19 NOV 2009

SC-3, 22 OCT 2009 to 19 NOV 2009



3500	CUDVI	NUMMO	ACGET
↑	✧	✧	
	112° TRK		
		2000	3100
	1.6 NM to RWY 17	2600	Procedure Turn NA
	1.6 NM	2.5 NM	3 NM
		3.03° TCH 45°	148°
			3.1 NM
CATEGORY	A	B	C
LNAV MDA	1220-1 569 (600-1)	1220-1½ 569 (600-1½)	1220-1¾ 569 (600-1¾)
CIRCLING	1220-1 569 (600-1)	1280-1¾ 629 (700-1¾)	1280-2 629 (700-2)